



THE CSS BOARD

ANNUAL REPORT

Commonwealth Superannuation Scheme
20012002



The Commonwealth Superannuation Scheme (CSS) is a superannuation scheme for employees of the Australian Public Service and other participating Commonwealth and Territory agencies. The CSS is administered by the CSS Board under an Act and Regulations with administrative support provided by the Chief Executive Officer and the staff of ComSuper. The CSS Board of Trustees is responsible for the overall management of the CSS and the direction of investment. The Board is appointed to represent both employers and employees. There is a chairperson and six other Board Members.



The CSS Board

Annual Report 2001–02

© Commonwealth of Australia 2002

ISSN 1442 6692
ISBN 0 642 99694 6

This work is copyright. Apart from any use as permitted under the *Copyright Act 1968*, no part may be reproduced by any process without prior written permission from the Commonwealth available from the Department of Communications, Information Technology and the Arts. Requests and inquiries concerning reproduction and rights should be addressed to the Commonwealth Copyright Administration, Intellectual Property Branch, Department of Communications, Information Technology and the Arts, GPO Box 2154, Canberra ACT 2601 or at <http://www.dcita.gov.au/cca>

The CSS Board

Street address:	Suite 2, Level 10 12 Moore Street Canberra City 2600
Postal address:	PO Box 1907 Canberra City 2601
Telephone:	(02) 6263 6999
Facsimile:	(02) 6263 6900
Internet:	www.css.gov.au
Annual Report:	www.css.gov.au/css/forms/annual.html
CSS Fund ABN:	19 415 776 361
SPIN:	CMS0100AU

ComSuper

Street address:	ComSuper Unit 1, Cameron Offices Chandler Street Belconnen ACT 2617
Postal address:	PO Box 22 Belconnen ACT 2616
Telephone:	(02) 6272 9000
Facsimile:	(02) 6272 9001
TTY:	(02) 6272 9827
Annual report inquiries:	Publications Section, ComSuper
Telephone:	(02) 6272 9317
Internet:	www.comsuper.gov.au

Note: All contribution, benefit, membership and exit statistics are derived solely from records available to the Commissioner for Superannuation as they stood at the time these statistics were compiled. Where statistics for earlier financial years are quoted, these may vary from those previously published due to the application of retrospective adjustments that are now reflected in this report. For similar reasons statistical information in this report may also vary from that presented by other agencies.

Senator the Hon. Nick Minchin, MP
Minister for Finance and Administration
Parliament House
Canberra ACT 2600

Dear Minister

In accordance with section 161 of the *Superannuation Act 1976* (the CSS Act), the CSS Board is pleased to present to you the annual report on its operations during 2001–02. The Report details the Board's activities in respect of the administration of the Commonwealth Superannuation Scheme and includes audited financial statements in respect of the management of the CSS Fund during the year ended 30 June 2002.

Subsection 162(2) of the CSS Act requires you to cause a copy of the report to be laid before each House of Parliament within 15 sitting days after you receive it.

Yours sincerely



Peter Reynolds
Chairperson
CSS Board
25 September 2002



Chairperson's Overview	ix
The CSS Board	1
CSS Board membership	1
Mission and operating principles	3
Administrative arrangements	7
CSS Fund Administrator	7
Human resources	7
Financial resources	8
Overview	11
Description of the scheme	11
Governance	13
Corporate governance statement	13
Principal duties	13
Governance matters outside the Board's control	14
General governance principles	14
Board's own conduct	15
Financial controls	18
Supervision of service providers	19
Risk analysis and compliance	20
Client feedback	21
Board Committees	23
Board and Board committee meetings	23
Investment Committee	23
Audit Committee	25
Administration Committee	27
Communications Committee	30
Governance Committee	33
Fund investment	37
Investment management	37
Events during the year	41
Fund performance	42
Crediting rate and reserving policy	46
Exit rate	49

Contributors	51
Account maintenance	51
Surcharge	55
Contributor communications	55
Benefit payments	60
Processing of invalidity claims	63
Accounts, records and funding of benefit payments	65
Pensioners	67
Account maintenance	67
Pensions in force	68
Pensioner communications	69
Dispute resolution	71
Avenues of review	71
Internal reconsideration	71
External review	74
Complaints and enquiries	76
Financial statements	79
Auditor–General's report	79
Statement by the Trustees	82
Financial statements for the CSS Board and CSS Fund	83
Actuarial Report	101
Appendixes	109
A: CSS in brief	110
B: Changes to legislation	112
C: Departments and approved authorities	114
D: Eligible superannuation schemes	117
E: Freedom of information	118
F: Publications	121
G: Contact officer	122
H: Compliance	123
I: Staffing statistics	124
J: Consultancies	125
K: Commonwealth disability strategy	127
L: Glossary	128
Index	129

Tables

Table 1:	The Board's fund managers at 30 June 2002	39
Table 2:	Former Strategic Asset allocation	41
Table 3:	New Strategic Asset allocation	41
Table 4:	CSS Fund performance 2001–02	45
Table 5:	Annual crediting rates 1998–2002	46
Table 6:	Exit rates declared in 2001–02	49
Table 7:	Contributor membership 1998–2002	53
Table 8:	Summary of surcharge activity 2001–02	55
Table 9:	Exits by type 2001–02	61
Table 10:	Reconsideration applications received and outcomes 2001–02	73
Table 11:	Responses to complaints or ministerial/Ombudsman enquiries	77

Charts

Chart 1:	Quality Service Index (QSI) scores	21
Chart 2:	Fund performance comparison over 5 years	45
Chart 3:	Crediting rates compared with earning rates and inflation rates 1998–2002	48
Chart 4:	Data quality index (DQI) 2001–02	52
Chart 5:	Commonwealth emails processed	58
Chart 6:	Commonwealth telephone calls	58
Chart 7:	Information seminars and personal counselling 2001–02	59
Chart 8:	CSS web site hits 2001–02	60
Chart 9:	Commonwealth benefit processing against standards, 2001–02	62
Chart 10:	Applications received, processed & on hand, 2001–02	62
Chart 11:	Time taken to determine Invalidity Cases	65
Chart 12:	CSS Fund—contributions received less benefits paid—2001–02	66
Chart 13:	Growth in CSS pensioner population 2001–02	68
Chart 14:	Pensioner telephone enquiries - Average speed of answer	70
Chart 15:	Pensioner emails received and processed 2001–02	70
Chart 16:	Age analysis of Commonwealth reconsideration cases	73



Chairperson's Overview

Annual results – Earning rates, crediting rates and reserving policy

As anticipated in last year's report, poor performance of investment markets, particularly equities, continued in 2001–02 and is still likely to continue.

This is reflected in the Fund's investment performance which delivered an earning rate of negative 5.1% (-5.1%) for the year just ended. The last time the Fund experienced a negative return was in 1990–91.

The 2001–02 financial year has been very difficult for investment markets with international equities falling by 21% and Australian equities by 5%.

Like most superannuation funds, the CSS Fund allocates investments across a wide range of asset classes, including both international and Australian equities, in order to spread risk, take advantage of the specific investment opportunities offered by individual assets and balance the different return cycles of each. This strategy resulted in the Fund exceeding its investment objective of providing real returns of 5% per annum after fees and taxes over 10 years.

In the year just ended, however, clearly any allocation to equities would have hurt performance for superannuation funds, many of which will be showing very low or negative returns for this year.

Many Australians will be experiencing their first low or negative return, and will not be aware that the consistently high level of returns over the past 15 years is the exception rather than the rule and that negative returns are part of a normal long-term investment cycle. In keeping with Market expectations, the Board's strategy anticipates the likelihood of a negative return on average once every five years.

As the Board is prevented by legislation from declaring a negative interest rate, the resulting crediting rate for members for the 2001–02 financial year is zero. However, the long-term performance of the CSS is still strong with a 5-year average crediting rate of 8% and a 10-year rate of 8.4%, significantly above inflation.

In order to meet legislative requirements preventing a negative crediting rate and to assist in smoothing out fluctuations in the crediting rates, the CSS operates a reserving strategy whereby in years of strong returns some earnings are held back from members and placed in reserve to top up crediting rates when earnings are weaker.

Given current market volatility – at the time of writing this report results showed further negative performance – it is impossible to say when markets will stabilise and rebound sufficiently for negative reserves to be eliminated. To ensure fairness for all members, the reserve will be replenished as quickly as possible with crediting rates remaining at zero until this is achieved.

Major events and developments

Governance programme launched

In a year which has seen corporate governance dominate the news, the CSS Board continues to lead the way with its practices in this area.

In December 2001, the Board appointed a primary governance advisor, Westpac Investment Management, for its \$3 billion investment in Australian equities.

The Minister for Finance and Administration, Senator Nick Minchin, welcomed the appointment as 'a commitment by the Boards to protect the superannuation funds under their management, and therefore the future retirement incomes of scheme members.'

This initiative is a first for Australia and was reported by media as 'raising the bar for standards across the corporate sector'.

Research conducted by Monash University, as part of the Board's governance activities, has already identified audit and environmental disclosure practices as areas for improvement for Australian companies in which the CSS invests. The Boards and Westpac continue to consult with companies to raise standards in these areas in order to create sustainable investment value and safeguard the long-term interests of members.

Investment advisors selected

Following a rigorous tender and evaluation process, the Board appointed three investment advisors to deliver the best possible external advice about its investment strategy, strategic asset allocation and the selection and monitoring of investment managers.

The tendering process was completed in the first half of the financial year and resulted in the appointment of: Towers Perrin Australia as overall strategic investment advisor; JANA Investment Advisors Pty Ltd as investment advisor on manager selection and monitoring, and on alternative investments excluding Australian private equity; and Wilshire Australia Pty Ltd as investment advisor in the specialist area of Australian private equity.

Investment review concluded

Every three years the Board conducts a major review of its investment strategy to assess factors that may influence returns both in Australia and overseas, to review the appropriateness of the Board's investment objectives and to formulate an investment strategy to meet those objectives.

One such review was undertaken in the second half of the 2001–02 year, resulting in changes to the Board's investment objective and strategic asset allocation in response to market projections which indicate global investment returns will be lower than have been seen over much of the last decade. This requires a change in direction for the next few years if the CSS is to adhere to its constraint of delivering a negative return on average only once every five years.

This triennial review, conducted in conjunction with strategic investment advisor, Towers Perrin, has resulted in:

- The Board lowering its average real return objective from 5% per annum after tax and fees to 4.5% per annum after tax and fees;
- changes in specific asset allocations, most notably a reduction in investment in international equities from 47% to 25% and an increase in international bonds from 0% to 15%; and
- a slight variance in the strategic asset allocation between the CSS and PSS, reflecting the net outflow situation of the CSS which, as a closed fund, has withdrawals exceeding contributions.

July 2002 continued to show weak results. However, the decision to reduce international equities and increase international bonds reduced losses by around 2%, adding about \$121 million to the CSS Fund's performance.

Committee initiatives

The Audit Committee continues to work with the Board's internal and external auditors to ensure all potential audit issues are addressed and resolved. This Committee's diligence has resulted in continued improvements in recent years.

The Administration Committee continues to work with the Scheme's administrator ComSuper on future directions and administration issues. It also deals with invalidity applications (in conjunction with the invalidity assessment panel), claims made against the Board and other administrative matters affecting the Board's Executive Unit.

To assure appropriate attention is given to increasingly complex investment matters, in April 2002, the Board established an Investment Committee (which comprises all Trustees) to focus on investment issues and related matters that are central to the Board's functions of managing and investing the CSS Fund. It is also the primary contact between the key external advisors on investment matters and the Board.

In June 2002, the Board established a Governance Committee (which superseded the investment governance committee, which arose from a board working party) to address governance matters on two broad fronts: corporate governance and investment governance. The Committee oversees the development, implementation and review of corporate and investment governance policy for the Board, and is the point of communication between the Board and external parties with respect to investment governance and proxy voting matters.

The Communications Committee continues to develop the Board's communications and education resources for members, supported by research conducted with members and employers throughout the year. Major developments included the completion of the web site redevelopment which was awarded a Silver Medal by the Conference of Major Superannuation Funds in 2002 and the completion of a communications strategy, including extensive consultation with members, employers and other key stakeholders, to see the Scheme through the next two years.

Service provision

In conjunction with its administrator ComSuper, the Board continues to focus on developing online services for members. This year the Board launched two new online services, called 'CEO online', which provides regular updates by the Board's Chief Executive Officer, and 'Investment Info' which provides background information to investment performance. In addition, we increased the functionality of our online calculator, the i-Estimator. All these services have been introduced in direct response to member feedback.

ComSuper works closely with the Board to improve customer services overall.

The Board subjects ComSuper to an annual effectiveness review, which concluded in April this year with service standards being agreed for the Board to continually review performance against.

Also, ComSuper participates in an international benchmarking service which allows the Board to compare its services to those of peers both in Australia and overseas. The Board is very supportive of ComSuper's participation in this benchmarking service and has noted that ComSuper continues to rate very well in a number of key service areas.

Up until three years ago, the Board was reliant on a small secretariat provided by its administrator ComSuper. The Board has now established an independent Executive Unit. The Executive Unit provides the Board with a structure and team dedicated to providing access to investment, finance, communications, research and administration professionals in house.

Future directions

The Board looks forward to further evolving its governance program started this year. Initial research studies have been undertaken to identify key governance issues facing Australian companies – these issues will drive a series of proactive policy submissions, awareness-building exercises with media and other opinion leaders, discussions with the companies in which we invest and, of course, other new governance initiatives.

One such governance-driven initiative, which will commence in the 2002-03 year, is the undertaking by the Board to exercise its right to cast proxy votes in the companies in which it invests. This more active role for the Board underscores its commitment to ensuring long-term shareholder value for CSS members and sends a clear signal to company management groups that the Board as a shareholder, will vote and actively consider every resolution in the best interests of its members. The CSS will be one of the first Australian super funds to take this proactive step.

Finally, the Board, in conjunction with its strategic investment advisors, will, in the short-term, be focused on the transition from old to new asset allocation including the assessment of its investment manager configuration. Changes to international equities and international fixed interest allocations occurred in early July 2002, and the other asset reallocations will occur over time.

SIS compliance

The CSS is a complying fund under SIS legislation and so continues to be eligible to have tax payable on net income of the Fund assessed at the concessional rate of 15 per cent. During 2001–02, a prudential consultation was conducted by APRA and no major issues were identified.

Thank you

It is my privilege to work with the committed and competent people who make up the CSS Board. The Trustees continue to demonstrate their commitment to managing the schemes in the best interest of members, devoting considerable time to carrying out their diverse duties and meeting their responsibilities.

Louise McBride, who has been a member of both the PSS and CSS Board, and devoted considerable time to her additional role on both the Investment and Audit Committees, concluded her term on 27 July 2002. Since her appointment in 1999, Louise made a significant contribution to the Board which benefited greatly from her expertise.

The Board's Executive Unit and its service providers, most particularly ComSuper, must also be thanked for their contribution over the past 12 months.

Clearly the next 12 months will be more challenging than ever as we work together to meet our responsibilities to our members and other key stakeholders.



Peter Reynolds
Chairperson
CSS Board



The CSS Board is a body corporate, by virtue of Section 27b of the *Superannuation Act 1976* (the CSS Act). The Board administers the Commonwealth Superannuation Scheme (CSS) in accordance with the provisions of the CSS Act and is responsible for the management and investment of the CSS Fund.

The Board has delegated the bulk of its general administration powers and responsibilities to Commonwealth Superannuation Administration (ComSuper).

CSS Board membership

The Board consists of seven members appointed by the Minister for Finance and Administration under Section 27F of the CSS Act. Membership comprises all of the members of the PSS Board and two additional members. Of the two additional members one is required to be a person with experience in, and knowledge of, the administration of one or more bodies or authorities established for a public purpose by or under a law or laws of the Commonwealth. While the other is nominated by the ACTU.

The chairperson and the ACTU nominees are appointed for periods not exceeding three years (but are eligible for reappointment), and the other members hold office for such period as the Minister determines.

Members holding office during the year were:



Mr Peter Reynolds—appointed Chairperson on 28 July 1999 to 27 July 2003.

Mr Reynolds is a Director of State Super Financial Services Pty Ltd and Chairman of the Local Government Financial Services Pty Ltd. He was the Chairman of the NSW State Authorities Superannuation Board and has wide experience in business and financial management through various positions in the public and private sectors. He is also Chairperson of the PSS Board.



Ms Winsome Hall—appointed 1 July 1996, reappointed to 30 June 2005.

Ms Hall is a member of both the CSS and PSS Boards. She is also a Director of H-G Ventures a listed venture capital investment company. Winsome has had extensive experience in superannuation policy as a Senior Advisor in the Department of the Prime Minister and Cabinet. She is a member of the CPSU. Her alternate is Mr David Irons of the Communications Workers Union, Melbourne.



Ms Louise McBride—appointed 28 July 1999 to 27 July 2002.

Ms McBride is the lead partner for the Financial Services Tax Group at Deloitte Touche Tohmatsu. She currently leads a team of partners at Deloitte that specialises in international and domestic banking and financial services. Before joining Deloitte she was partner with a major Australian Law firm. She has had extensive experience in tax-based financing and has played an active role in the tax reform debate. Ms McBride is a member of the Boards of the Export Finance Insurance Corporation, the Taxation Advisory Panel and the National Portrait Gallery. She is also a member of the Corporations and Securities Panel and the Corporations and Market Advisory Committee. She is also a member of the PSS Board. Her alternate is Ms Sandra Wilson, Branch Manager, Superannuation Branch, Department of Finance and Administration.

Ms McBride's appointment ceased on 28 July 2002, Ms Sandra Wilson filled the vacancy until 19 September 2002 when the Minister appointed Mr David Connolley as a replacement.



Ms Cathy Manolios—appointed 25 July 2000 to 24 July 2003.

Ms Manolios is a General Counsel with Zurich Financial Services Australia Limited. She has extensive experience in the life insurance and superannuation industry. She is also a member of the PSS Board. Her alternate is Ms Sandra Wilson, Branch Manager, Superannuation Branch, Department of Finance and Administration.



Ms Sally O'Loughlin—appointed 1 July 2001, reappointed to 30 June 2005.

Ms O'Loughlin worked in the Australian Public Service in various Agencies between 1971 and 1983. In 1983 she was elected Assistant Secretary, then Secretary of the WA Branch of the CPSU, and from 1991 until 2000 was Assistant National Secretary based in the union's head office in Sydney where she was spokesperson on public service superannuation. She was also an employer nominated Trustee of the CPSU superannuation fund. She is a Director of NRM Pty Ltd. She is also a member of the PSS Board. Her alternate is Mr John Flitcroft (a member of the CPSU and a Board member from 1990 to 2001).



Ms Joy Palmer—appointed 1 July 1996, reappointed to 30 June 2005.

Ms Palmer is the Chair of Statewide Superannuation Trust, a Director of the AGEST Superannuation Fund, and a member of the (SA) Public Transport Standards Committee. Her alternate is Mr Paul Smith, Bureau of Meteorology, Melbourne.



Mr Richard Balderstone—appointed 17 June 1998 to 16 June 2004.

Mr Balderstone has had over 20 years' experience in the stockbroking/ investment banking industry. After 10 years with ABN AMRO (and BZW) Richard was appointed Head of Client Services at Jardine Fleming Capital Partners Group. He is also a Director of the Australian Railtrack Corporation. His alternate is Ms Sandra Wilson, Branch Manager, Superannuation Branch, Department of Finance and Administration.

Mission and operating principles

Charter 2001–02

The Board's charter is:

- to administer the *Superannuation Act 1976* (other than section 154 which relates to the reconsideration of decisions made when the Commissioner for Superannuation was responsible for the administration of the Scheme); and
- to manage and invest the CSS Fund so as to maximise the real return earned on investments subject to a tolerable level of short-term volatility.

Operating principles

In the operation of the CSS, the aims of the trustees are:

- to identify and capture the best investment opportunities for increasing the real value of the Scheme's assets, keeping in mind the need to protect their future integrity
- to ensure that all administrative transactions are carried out in accordance with relevant legislation;
- to provide members with appropriate services so that their interaction with the Scheme will be as satisfactory as the best of their experiences as a client elsewhere;
- to continuously seek ways to improve the efficiency and effectiveness of the Board's activities and those of its delegates;
- to ensure the assets of the Scheme and the interests of its beneficiaries are properly safeguarded at all times;
- to keep all relevant parties informed of the condition, conduct, benefits and services of the CSS, according to the interests of each party; and
- to maintain proper records and accounts in respect of operational and financial activities.

Performance indicators

Indicators of performance, other than those relating to investment, are set down in the Service Level Agreement between the Board and ComSuper. Details of performance against the indicators can be found on the following pages:

- the investment performance of the Fund relative to appropriate benchmarks (see Fund Performance, page 42);
- the time taken to process benefit payments (see Benefit payments, page 60);
- the time taken to finalise applications for Invalidity Retirement Certificates (see Invalidity Processing, page 63);
- the number of appeals against decisions taken under delegation and the outcome of those appeals (see Dispute resolution, page 71);
- the success of the communications strategies used to inform members of relevant superannuation matters and of the Board's activities (see Communications Committee, page 30); and
- the monitoring of member service satisfaction (see Governance, page 13).

In addition, the Board reviewed the effectiveness of all aspects of its administrator's performance in a thorough evaluation. It intends to undertake such an effectiveness review annually.

Board Executive

The Executive Unit is responsible for providing advice to the Board, for implementing Board decisions and for the ongoing management of the Board's functions and responsibilities. Specifically the Executive Unit is responsible for:

- the development and implementation of corporate strategies and plans;
- the provision of investment advice and analytical resources;
- the management of the relationships between the Board and service providers;
- ensuring compliance with the *Superannuation Industry Supervision Act 1993* (SIS) and Scheme rules and legislation;
- member communications generally and in particular the preparation and production of annual reports to members and Parliament, and member statements; and
- comprehensive administrative and support services to the Board.



Administrative arrangements

CSS Fund administrator

The Board has delegated the bulk of its general administrative powers and functions to the Commissioner for Superannuation and to staff of ComSuper.

As the Board's scheme administrator, ComSuper's major areas of activity encompass the calculation and payment of benefits (including invalidity benefits), the maintenance of records of contributors and pensioners, the receipt of and accounting for contributions from employing agencies in respect of their employees, the reconsideration and review of decisions on entitlements and the provision of information to the membership.

Human resources

During 2001–02, the number of staff employed directly by the Board increased to nine as the Board established its internal investment team and extended its finance, research and administration activities. Staff employed directly by the Board are engaged on fixed term contracts and are not employed under the *Public Service Act 1999*.

In addition, the Board continued to receive the services of four full time staff seconded from ComSuper. To the extent that these staff provided services in respect of the management and investment of the CSS Fund, the CSS Board has reimbursed ComSuper for the salaries and salary related costs of these staff.

Statistics on Board staff by gender and employment category are provided in Appendix I.

Professional development

All Board staff, including seconded staff, had access to a range of continuing professional development activities including attendance at major industry conferences such as CMSF, ASFA and IFS Equities.

Occupational health and safety

Under the *Occupational Health and Safety (Commonwealth Employment) Act 1991* and the *Safety, Rehabilitation and Compensation Act 1988*, the CSS Board has a general duty of care which must be met by taking all reasonably practicable steps to protect the health and safety of its employees and third parties at work. Staff employed by the CSS Board are covered by Workers' Compensation which is managed by Comcare.

During the year:

- there were no dangerous occurrences under section 68 of the *Occupational Health and Safety (Commonwealth Employment) Act 1991*;
- there were no workplace inspections carried out by Comcare; and
- there were no remedial Provisional Improvement Notices issued.

Financial resources

Board administration costs

The CSS Board is responsible for the administration of the CSS Scheme and the management and investment of the CSS Fund. Costs of the CSS Board which are related to its responsibilities for the management of the CSS Fund and the investment of its moneys are a charge against the Fund. Fees paid to the Chairman of the CSS Board are also a charge against the Fund.

All other costs incurred by the CSS Board are met from revenues generated through user charging arrangements with employer agencies and the Department of Finance and Administration.

Since the current CSS legislation does not allow the CSS Board to hold moneys other than moneys held in the CSS Fund, ComSuper has been commissioned to, on behalf of the Board, recover the Board's administration costs from employer agencies. Under this arrangement, the Commissioner for Superannuation has therefore been accountable for and required to report in his financial statements, the Board's revenue and operating expenses for the 2001–02 and previous financial years.

New funding arrangements from 1 July 2002

The current funding arrangements in respect of non-Fund expenses effectively require the Commissioner for Superannuation to be accountable for the financial activities of the CSS Board despite the fact that the Commissioner has no control over the CSS Board's financial activities.

In the absence of changes to the CSS legislation that would enable the Board to hold moneys other than moneys belonging to the CSS Fund, the Board obtained approval from the Minister for Finance and Administration to have the CSS Board prescribed as an agency under the *Financial Management and Accountability Act 1997* (FMA Act). Regulations to prescribe the CSS Board as an FMA agency were made in June 2002 with the regulations to take effect from 1 July 2002.

The effect of obtaining 'FMA agency' status is that the CSS Board will be able to receive its agreed share of the revenues recovered by ComSuper from employer agencies as Commonwealth public moneys, and it will be directly accountable for the expenditure and management of those public moneys. For the 2002-03 financial year, the Board will therefore be required to prepare financial statements in respect of both the moneys held in the CSS Fund and the Board's administration moneys.

Purchasing

In 2001–02, the CSS Board complied with the purchasing principles and policies outlined in ComSuper's Chief Executive Instructions. These instructions are consistent with the key principles set out in the Commonwealth Procurement Guidelines: value for money; open and effective competition, promoting national competition and developing industry; supporting other Commonwealth policies; ethics and fair dealing; and accountability and reporting.

Assets management

The Board's assets, not including the investments and other assets of the CSS Fund, were recorded and managed by the Commissioner for Superannuation. The Commissioner's strategy for managing assets is set out in the ComSuper Chief Executive Instructions.

Ecologically sustainable developments and environmental performance

The Boards in conducting their operations make every effort to minimise the environmental impact of their activities by adopting the following guidelines:

- All waste paper and cardboard will be recycled.
- Lighting and energy use will be minimized.
- The Boards' offices, where practicable, will use recycled paper and other products in their activities.

All Board publications will be produced in accordance with best environmental practice.



Description of the scheme

The Commonwealth Superannuation Scheme (CSS) is a split-benefit superannuation scheme, with benefits generally being made up of two parts:

(a) a member-financed component

This benefit is based on the contributions paid by the member into the Fund plus accumulated interest. Interest is credited at rates determined by the Board, in line with earnings of the Fund; and

(b) an employer-financed component

The employer component includes two parts.

- The first part, which in most circumstances is paid as a non-commutable indexed pension out of Consolidated Revenue, is a defined amount. The amount payable depends on the reason for exit and has regard to several factors including final salary, age and length of contributory membership. It does not depend on the earning rate of the Fund.
- The second part of the employer component is the superannuation productivity benefit, which comprises employer contributions and accumulated interest.

SIS compliance

The CSS is a complying fund under the *Superannuation Industry Supervision Act 1993* (SIS) and so continues to be eligible to have tax payable on net income of the Fund assessed at the concessional rate of 15 per cent. During 2000–01, a prudential consultation was conducted by APRA and no major issues were identified by APRA in that consultation process.



Corporate governance statement

The CSS Board (hereafter referred to as 'the Board') is constituted under the *Superannuation Act 1976* and the attendant regulations to the Act. Accountable to the members of the Scheme under the Act, under the SIS Act and under general corporate legislation, the Board stands independent of the government of the day and independent of any other constituency. The principal responsibility of the Board is to act in good faith, with prudence and in the members' best interests in respect of the investment and administration of the Scheme.

Principal duties

The Board's principal duties include:

- To manage and invest moneys to meet the purposes of the Scheme;
- To cause the payment of moneys in and out of the Scheme to occur as prescribed;
- To safeguard the assets of the Scheme and the interests of the beneficiaries;
- To inform all relevant parties of the Scheme's condition and conduct; and
- To cause proper records and accounts to be maintained about the operation and financial activities of the Scheme.

In undertaking these duties, the Board has wide discretions. This factor, together with the reliance the members have on the Board for the value and delivery of their retirement benefits, makes it essential that the Board, its officers, employees and delegates act at all times in a manner that is appropriate to the fiduciary duties owed to the members.

The following statement sets out the principles which the Board, its officers, employees and delegates are intended to uphold as they each carry out their duties. In some instances specific conduct is stipulated, reflecting the particular importance of the action for the Board's proper governance.

The Board does not intend this Statement to be read as a set of rules, where each word is scrutinised for its legal meaning. It intends to convey in plain words the obligations placed on, and the behaviour expected of, both trustees as individuals and those other persons covered by this Statement.

The Board will review this statement annually, and update or expand it as appropriate to ensure it remains effective and current.

Governance matters outside the Board's control

The Board does not control its own composition or its own remuneration. The power to appoint Board members is vested in the Minister for Finance and Administration under the Act, subject to consultations specified in the Act.

The Remuneration Tribunal sets the remuneration of Board members, including their remuneration for committee representation and expense reimbursement.

General governance principles

The Board's own behaviours reflect its overriding general governance principles, and, where appropriate, mirror the behaviour, which the Board expects from companies in which the Board invests.

The Board's duties shall be carried out in good faith, prudently, and in accord with the relevant legislation so that the best interests of the members are served.

The Board will at all times act ethically and impartially. No person covered by this Statement may place their own interests above that of the members in respect of the fiduciary duties owed to the members.

The Board's responsibilities for the Fund and the Scheme is supported by business planning, business risk assessment, management reporting, and arrangements for audit, internal control and compliance, all conducted on a regular basis. The Board's appointments and delegations are in writing and the Board regularly reviews its own activities and the activities of the persons through whom it works, to ensure that a clear and proper set of accountabilities remains in effect.

The Board will undertake an annual review of its performance.

Board's own conduct

Continuing qualifications and disclosure of interests

Board members will lodge annually a Disclosure of Interests Statement and a Declaration of Related Party Transactions.

Board members will advise no later than the start of the next Board or committee meeting:

- if any event has changed their continuing compliance with the trustee qualification requirements set out in the *Superannuation Industry (Supervision) Act 1993, (SIS)* ; or
- if any agenda item requires a disclosure of interest; or
- if any change in their business relationships has occurred that might have a connection with the Board's duties or activities.

Where a Board member has a conflict of interest in respect of any matter, that member will not engage in discussion or decision of the matter.

Confidentiality

Board members will keep confidential all information or material provided or made available to them, dealing with or related to their functions as Board members, except where such information or material is publicly available or is required by law to be disclosed.

Board members will continue to be bound by this obligation of confidentiality after they cease to be a Board Member.

In this context, 'Board members' include persons appointed to the Board, staff employed by the Board, service providers to the Board, and any person to whom Board papers, documents or information is made available.

Communications, contracts or arrangements between the Board and service providers will generally be entered into on a 'commercial-in-confidence' basis.

Legal professional privilege

The general policy of the Board is that legal advice provided to the Board for the performance of its functions and duties will not be made available or disclosed.

Securities dealing

The Board is mindful of its obligations under the law to not misuse non-public information of which it becomes aware in the course of carrying out its duties. Board members will maintain appropriate records of their dealings in securities and will provide a copy of these records to the Board Secretary if requested by the Board.

This requirement applies to the Board's staff, and any other persons connected with the Board who have access to the investment information of the Board.

Gifts and entertainment

Board members should decline or disclose instances of repeated or significant entertainment or gift from any service provider. Board member contact with current and potential service providers is recognised as useful to enhance the knowledge and understanding of the Boards. It is recognised that service providers to the Board provide modest entertainment and small gifts from time to time. Board members will maintain a record of instances of any entertainment or gift provided by any service provider, which may be made available if requested by the Board.

Insurance

The Board will maintain insurance in respect of its own actions and in respect of past Board members in order to protect the interests of Scheme members.

Board committees

The Board has constituted several committees to increase its own efficiency and to provide a means of more detailed consideration of matters important to the running of the Scheme. The governance structures and processes of the Board's committees include formal risk management and reporting arrangements, which reinforce the commitment of the Board to scrutinize its own processes to ensure transparency in identification of conflicts and separation of functions. Board committees are subject to written terms of reference and care is taken to ensure the activities of the committees remains consistent with the Board's duty of governance over the Scheme's activities.

Each committee will review its performance annually and the Chair of each committee will report to the Board following each review.

Meetings and agenda

The Board will meet at least six times each year and will ensure that it receives appropriate and reliable reporting on the condition of the Scheme and the actions of its staff, delegates and other service providers.

Although the Board's agenda is initiated by the Chief Executive Officer on behalf of the Board, the Board or any Board member may require a matter to be brought before the Board at its next or any subsequent meeting.

Professional development

The Board's policy is that Board members and staff should engage in continuing professional activities relevant to the operation of the Board as a whole and their individual Board member or staff duties. The Board provides organisational and financial support for such professional development activities.

Professional development activities may include local and international conferences, seminars and workshops, training courses and study tours on specific matters relevant to the Board's functions.

Once a year the Board will consider the major industry conferences (both in Australia and overseas) to be held over the forthcoming year. The Board will determine attendance based on the relative value to the Board's performance. These conferences are CMSF, ASFA, IFS Equities, CIE (Major Market Players), CIE (International), CEM – International Benchmarking. Attendance at other conferences shall be determined by the Chairperson and Chief Executive Officer.

Board members and staff who undertake professional development activities are expected, where appropriate, to provide reports to the Board and to distribute relevant papers to other Board members and staff.

The Board also encourages Board members to be members of relevant professional bodies such as the Australian Institute of Superannuation Trustees and the Australian Institute of Company Directors and will meet the costs of such memberships.

Financial controls

Financial budgeting

The Board prepares an annual financial budget in respect of the whole of its and the Scheme's activities each year. Financial results are reported regularly to the Board against this budget.

Appointment of auditor

The Board is required by legislation to use the Auditor-General as its auditor. The Auditor-General's Office, in turn, contracts an external, independent party to conduct the audit.

The Board provides a written brief to the auditor in respect of the annual audits and ensures that all advice from the Auditor is given due consideration, which is documented through committee or Board minutes. The process meets the requirements of all relevant legislation.

Financial management framework

From 1 July 2002, in respect of its administration activities, the Board is accountable to Parliament and must comply with the provisions of the *Financial Management and Accountability Act 1997* (FMA Act). Accordingly, the FMA Act requires the Board to prepare annual audited financial statements in respect of its administration activities.

The Chairperson of the Board has issued policies, known as Chief Executive Instructions, regarding the Board's financial management. These instructions, which are mandatory for the Board and its staff, are also supported by financial delegations and detailed accounting procedures.

Fraud control plans

The Board has in place detailed fraud control plans that set out the Board's policies and strategies for the control, prevention and detection of fraud as well as control over the mismanagement or abuse of resources. The Board is required to ensure, and then certify in its annual reports to the Minister, that fraud risk assessments and fraud control plans have been prepared in accordance with the Commonwealth Fraud Control Guidelines; that appropriate fraud prevention, detection, investigation and reporting procedures and processes are in place; and that annual fraud data has been collected and reported that complies with the Commonwealth Fraud Control guidelines.

Internal audit and internal control

The Board has completed a detailed analysis of compliance and risks. The Board has engaged an Audit Advisor as an additional control mechanism to advise on financial, systems and related matters.

Supervision of service providers

Adequacy of resources

The Board regularly considers the resources required for the effective and proper running of the Scheme and act to ensure that its available resources align with these requirements.

Written appointments

All appointments, delegations and arrangements with service providers are recorded in writing and with adequate and proper description of the terms of the appointment. Where required by law or appropriate to the circumstances, such appointments take the form of formal contracts.

The Board encourages its staff, delegates and service providers to advise the Board of any lack of clarity in the terms of their delegated authority or accountability, or of any impediment in their ability to carry out their duties to the standards expected by the Board.

Periodic reporting and reviews

The Board ensures that it receives adequate, reliable and relevant reports on the activities of all those appointed by it. The Board is concerned to use resources of appropriate quality and capacity to its needs, at a reasonable cost. For this reason, all appointments are periodically reviewed, and where the Board concludes that it is appropriate, such reviews will include market testing.

Working relationships between the Board, the internal investment team and external advisors

In carrying out its duty to manage and invest the moneys to meet the purposes of the Scheme, the Board has both an internal investment team and a number of external advisors at its disposal. The internal investment team is the Board's primary investment advisor. The investment team is assisted in this task by several external advisors who provide advice for the Board's consideration on strategic asset allocation and investment policy, risk monitoring, investment research and performance reporting, and investment manager selection and monitoring across all asset classes including alternative investments.

Under this arrangement, the internal investment team plays an active role in managing the Scheme's investments by coordinating advice from external advisors according to an annual work plan presented to the Board that includes all the investment related work that is envisaged for the year ahead, and undertaking independent analysis of recommendations brought to the Board by those advisors.

In the case of differences in views between the external advisors and the internal investment team on any investment issues, these will be made transparent to the Board in any papers and/or discussion. There will always be a recommended course of action from the internal investment team. This process ensures that the Board makes informed investment decisions.

Risk analysis and compliance

Business risk

The Board regularly reviews its business risks and its protection against the risks identified. Consideration of these reviews is documented through committee or Board minutes.

Compliance program

The Board has a systematic compliance program carried out under the direction of the Audit Committee, with a report provided to the Board annually. Breaches of compliance are reported to the Board as these occur but following consideration by the Audit Committee or, if appropriate, another committee.

It is the Board’s policy to encourage any person connected with the Board, who may know or suspect a breach of compliance, to report this to the Chief Executive Officer to the Board, the Chair of the Audit Committee or the Chair of the Board.

Client feedback

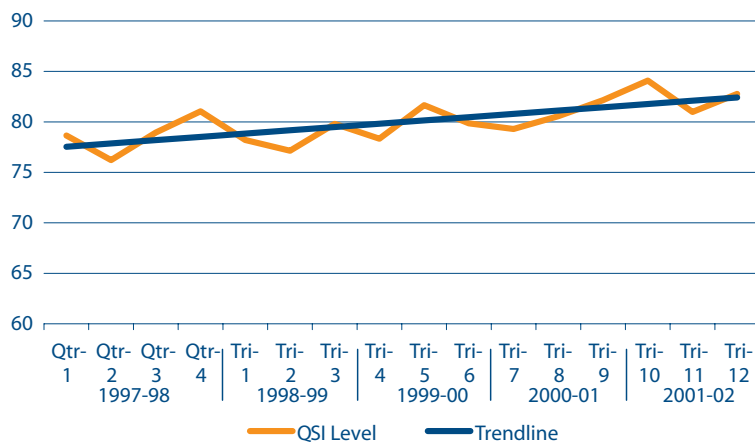
During 2001–02, on the Board’s behalf ComSuper again undertook a comprehensive series of client satisfaction surveys with the assistance of Canberra-based firm Orima Research. Clients who had recent contact with one of ComSuper’s services were surveyed at three separate times throughout the year. ComSuper’s clients have again rated the quality of ComSuper’s service favourably on a range of customer service dimensions.

The Quality Service Index (QSI) for Commonwealth clients, introduced to measure the survey results and to enable comparison between survey periods, currently ranks in the region of an 83% satisfaction level, Chart 1, which shows ComSuper’s QSI scores for the Commonwealth schemes in each of the sixteen survey periods since data collection began in 1997–98, shows a gradual improvement in client satisfaction.

At year’s end, ComSuper was in the process of extending regular client surveys to cover services offered to employers.

The survey results feed into ComSuper’s continuous improvement process. Action plans are derived and reported against, and changes made to procedures as a result of the survey feedback, with the objective of improving client service.

Chart 1: Quality Service Index (QSI) scores



Service award for excellence

In June, the Board’s administrator, ComSuper, received a Gold Award at the 2002 Client Service Charter Awards for excellence in integrating its service charter into core service delivery outcomes and organisational culture. Awards were presented for use of service charters across three categories including demonstrated excellence in core service delivery and organisational culture, driving online service delivery, and in services to rural, regional and remote Australians.



Minister Assisting the Prime Minister for the Public Service, the Hon Tony Abbott MP, presenting an award for excellence in Service Charters to Peter Skinner, ComSuper’s acting Chief Executive Officer.

ComSuper’s general approach to service delivery is one of continuous improvement in a competitive environment and while maintaining its standards, identity and culture as a Commonwealth agency, the organisation seeks to blend the best of public and private sector approaches to service delivery. Service commitments embodied in the service charter are a subset of a much wider and comprehensive performance management and reporting system—the management systems required to produce regular reports are extensive and increasingly integrated with core systems underlying superannuation administration. Performance is closely monitored and reported against on a monthly basis.



Board Committees

Board and Board committee meetings

The Board has five standing committees of Board Members:

- the Investment Committee comprising all Board members. The Chair of the Committee is the Chair of the Boards, Mr Peter Reynolds;
- the Audit Committee comprising Ms Winsome Hall, Chairperson; Ms Joy Palmer, Member and Ms Louise McBride, Member;
- the Administration Committee comprising Ms Joy Palmer, Chairperson; Ms Sally O'Loughlin, Member and Ms Cathy Manolios, Member;
- the Communications Committee comprising Mr Richard Balderstone, Chairperson; Ms Winsome Hall, Member and Ms Sally O'Loughlin, Member;
- the Governance Committee comprising Ms Joy Palmer, Chairperson; Ms Winsome Hall, Member and Ms Cathy Manolios, Member.

There is also a Reconsideration Advisory Committee comprising senior ComSuper officers Mr Trevor Dockett, Mr Michael Carberry and Mr Hugh Major.

Investment Committee

Purpose

The combined PSS/CSS Investment Committee advises both Boards on investment issues and related matters that are central to the Boards' functions of managing and investing the funds. It is the primary contact between the key external advisors on investment matters and the Boards.

Functions

The Committee:

- considers and reviews the Fund's investment objectives;
- considers and reviews the Fund's investment strategies;
- considers specific strategic investment proposals;
- reviews investment manager performance;
- reviews the performance of the Fund's custodian;
- reviews and evaluates the performance of asset consultants and other investment related service providers;
- evaluates appropriate investment structures for the holding of the Fund's assets;
- considers investment manager mandates;
- considers reports from internal and external advisors on investment issues;
- reviews and evaluates the Board's brokerage recapture and securities lending programs;
- reviews and evaluates the investment performance of the Funds; and
- reports and make recommendations to the Boards on all investment matters.

Membership

The Committee comprises all members of both the PSS and CSS Boards.

Chair

The Chair of the Committee is the Chairperson of the Board. In the absence of that person, members present at a meeting of the Committee may appoint one of their number as Chair for that meeting.

Quorum

A quorum for a meeting of the Committee is four members, including at least one employee member and at least one employer member of the Board.

Meetings

The Committee meets as required to perform its functions. The Committee may meet in person, or by utilising telephonic or video-conferencing facilities.

Decisions

The Committee is not a decision-making entity. However, if all members of both the PSS and CSS Boards are present at a Committee meeting, they may agree to decide a matter as an out of session decision of the Boards by signing a resolution made available to them. In this case, the existing practices and procedures of the Board apply in relation to the reporting and recording of out of session decisions.

Review

The Committee's performance is reviewed annually and reported to the Board.

Issues considered in 2001–02

The Investment Committee was established in early 2002. The main area of activity for the Committee during that time was the Triennial Investment Strategy Review. The review encompassed all facets of the investment strategy, including the Investment Policies and Objectives, the Asset Allocations, and Fund Performance. The Committee also reviewed specific strategic investment proposals as well as investment manager performance and the performance of the Fund's custodian.

Audit Committee

Purpose

The combined PSS/CSS Audit Committee advises both Boards on accountability and audit related matters. It operates as a check on the management practices of its own operations, the Scheme administrator (ComSuper), fund investment managers, and master custodians.

The Committee assures the Board that its financial statements are based on appropriate accounting concepts, systems and techniques. It assures the Board that the audit arrangements within service providers (ComSuper, fund managers, master custodians) and its internal functions are operating effectively, and that appropriate fraud control strategies are in place.

The Committee reports annually to the Board on its operations.

Functions

The Audit Committee is the point of communication between the Board and the Internal Audit Committee of ComSuper, its own internal audit and with the Australian National Audit Office (ANAO).

The Audit Committee establishes internal and external audit plans and reviews:

- financial statements with both internal and external auditors prior to their approval by the Board;
- accounting policies adopted or any changes which are made or contemplated by ComSuper, and which affect the Board's areas of responsibility;
- the annual audit plans of ComSuper where they relate to areas of Board responsibility;
- the audit reports of major audits undertaken;
- the extent to which internal audit recommendations are implemented;
- interim financial information; and
- procedures and policies established under the *Financial Management and Accountability Act 1997*, including advising the Board's Chairperson on relevant matters.

The Committee provides regular reports to the Board as to whether the internal controls employed by ComSuper and other service providers give reasonable assurance that the Board's objectives and goals are being met efficiently and economically.

With the agreement of the Board, the Committee may initiate specific audit investigations.

Frequency of meetings

The Committee meets as necessary (but in any event, not less than twice per year).

Membership

The Audit Committee is appointed by the Board and usually comprises three members, at least two of whom are members of both the CSS and PSS Boards. The term of appointment of individual members of the Audit Committee is at the discretion of the Board.

During the year the Audit Committee comprised Ms Winsome Hall, Ms Joy Palmer and Ms Louise McBride.

Issues considered in 2001–02

- Internal Audit Reports;
- PSS and CSS Fund Audits;
- Fund Financial Statements;
- Review of Custodian Services; and
- ANAO Report on the Management of Commonwealth Superannuation Benefits to Members.

Administration Committee

Purpose

The combined PSS/CSS Administration Committee advises both Boards on policy and operational matters relating to the operation of the Executive Unit and the contracting and performance of service providers to the Boards.

The Administration Committee is to become familiar with the policy activities of service providers and the Department of Finance and Administration (DoFA). It supervises such activities of service providers and monitors those of DoFA to enable it to respond or influence as necessary.

The Committee assures the Board of adequate governance and that processes are established and followed to ensure compliance with legislative requirements and the Board's policies.

The Committee reports annually to the Board on its own operations.

The Committee also monitors legislative and industry activity which may impact on the operation of the schemes.

Functions

The Committee undertakes the following responsibilities:

Service providers

Establishes contracts, performance agreements and reporting arrangements with service providers;

- Monitors the performance of providers other than auditors, including provider/Board/executive relationships;
- Ensures that all providers', excluding investment related service providers, activities are carried out in accordance with Board policy; and
- Reviews business continuity arrangements.

Legislative/Parliamentary

- Advises the Board of implications of legislative changes; and
- Advises and assists the Board with parliamentary submissions.

Invalidity

Monitors and reviews invalidity arrangements.

Legal

Reviews and make recommendations to the Board with respect to legal claims.

Administration

- Considers and makes recommendations to the Board as appropriate on matters with respect to pricing (charges to employers) and billing;
- Examines and recommends to the Board the annual budget and monitors expenditure;
- Monitors Business Plan activities;
- Oversees the Executive's;
 - i) organisation and in particular is responsible for the decision as to whether to contract out a service or provide it through internal resources; and
 - ii) accommodation arrangements including business continuity arrangements and makes recommendations to the Boards.

Insurance

Reviews and monitors all insurance arrangements including trustee indemnity, group life, travel and the like.

Other

- Continuously monitors industry best practice arrangements and makes recommendations where necessary;
- Supervises APRA reviews;
- Advises and assists the Board with industry submissions and participation;
- Deals with any other matters referred to it by the Board or the Chairperson; and
- Reviews the Committee's operation and terms of reference.

Frequency of meetings

The Committee meets as necessary but at least four times per year.

Membership

The Committee is appointed by the Board and usually comprises three members, at least two of whom are members of both the CSS and PSS Boards. The term of appointment of individual members is at the discretion of the Boards.

During the year the Committee comprised Ms Joy Palmer (Chair), Ms Cathy Manolios, and Ms Sally O'Loughlin.

Issues considered in 2001–02

- Review of TPD policies and procedures;
- Invalidity assessment panel contract;
- Legal claims;
- ComSuper forward planning;
- Investment adviser review;
- Relocation of Board accommodation;
- Board Policies and Guidelines;
- Compliance reports;
- Trustee indemnity insurance
- Legislative policies and changes affecting the Schemes;
- Rationalisation of PSS Scheme rules;
- Board business planning;
- Executive performance reviews.

Communications Committee

Purpose

The combined PSS/CSS Communications Committee advises both Boards on communication related matters.

The Committee ensures that the Board meets the information disclosure requirements imposed by SIS through clear, timely and accurate reporting to members and ensures that members are informed of Trustee decisions and other developments which may affect members' interests.

Functions

The Communications Committee is the point of communication between the Board, the scheme administrator and other service providers for communications issues.

The Communications Committee undertakes the following tasks:

Policy and planning

- develops policy, which defines the strategic direction of Board communications to members and other stakeholders as determined by the Board;
- develops the budget for Board approval and oversees allocation of funds to communications projects;
- examines and reports to the Board on additional services to members, which the Board should consider providing.

Implementation

- oversees implementation and approves communications service providers to ensure implementation of the Board's communications strategy;
- ensures all member communications comply with SIS and other compliance requirements;
- approves the content of all communications to members (including annual report to Parliament),

Evaluation

- establishes an evaluation and research program in relation to development of the Board's communications strategy and specific communications projects.

Governance

- reviews its terms of reference every 12 months in conjunction with the Communications strategy;
- annually reviews Committee operations and performance.

Frequency of meetings

The Committee meets as necessary (but in any event, not less than four times per year).

Membership

The Communications Committee is appointed by the Board and usually comprises two members, both of whom are members of both the CSS and PSS Boards. The term of appointment of individual members of the Communications Committee is at the discretion of the Boards.

The Communications Committee currently comprises Mr Richard Balderstone (Chair), Ms Winsome Hall and Ms Sally O’Loughlin.

Issues considered in 2001–02

The Communications Committee met during the year to consider a wide range of issues associated with member communications. These issues included:

- further increasing our knowledge of our members' needs through research studies, and ongoing feedback through telephone and online tracking;
- continuous improvement to member statements and annual reports to members;
- further development of the Scheme’s brand including the creation of a Communications Guide to guard the integrity of the brand and its usage;
- improved communications with stakeholders through the creation of a Communications Working Group;
- the creation and fulfilment of an in-house Communications Officer function to better coordinate and oversee communications projects;
- the development and implementation of a nationwide direct mail campaign to promote Member Services Online;
- further redevelopment of the web site, including the introduction of a new vehicle, CEO Online, to further build relationships with members;

- development of Communications Plan Stage 2;
- the further development of information seminars to members to include one-to-one counselling for members and additional locations.

Annual member statements and reports

The Board's principal means of communicating with members is through its Annual Member Statement and Report to Members, which is sent to all contributing members and preserved benefit members.

The report provides comprehensive information about the CSS Fund's investment performance and also details changes to Scheme rules and changes in the superannuation industry at large, insofar as these are relevant to scheme members.

The Board's Annual Report to Members is packaged with the member statements providing detailed personalised information about each individual's entitlements. The Board has again retained the services of communications consultants, Social Change Media, in order to improve the quality and content of this year's package.

This year, in response to member feedback the Committee developed an integrated pack strategy to allow for cohesive representation of the brand and a more efficient production process.

The Committee also undertook the following initiatives in response to members' feedback:

- making the size for both the Annual Report and Member Statement more manageable;
- the integration of the contributor and deferred benefit Annual Reports to create more holistic communications;
- compliance information at the end of the annual report document so that front of document can convey simple, clear messages;
- focusing on audience segments, with a particular focus on retirement; and
- implementing a web-driven design strategy.

Member statements were available online to members through a secure site in the second week in September.

SIS legislation requires the Board to distribute annual member statements by 31 December each year. During the 2001–02 financial year member statements were distributed in mid-September, which exceeds the SIS requirements.

Website development

As part of its new communications strategy the Board introduced a new web site for CSS members for which it won a silver award from the Conference of Major Superannuation Funds (CMSF).

The new site was promoted in conjunction with the introduction of online services and attracted high levels of member interest.

Performance indicator

The success of the Board's Communications Strategies can be gauged from the positive feedback received through the member satisfaction surveys (see page 21) where high quality performance was achieved across a range of customer service dimensions e.g. member statements, written estimates and the telephone advisory service.

Inquiries about any of the publications mentioned above or the Board's web site can be addressed to:

Communications Manager
CSS Board
PO Box 1907
Canberra City ACT 2616
Telephone: (02) 6263 6999
Fax: (02) 6263 6900

Governance Committee

Key function

The combined PSS/CSS Governance Committee advises both Boards on governance matters.

Responsibilities and role

The Committee addresses governance matters on two broad fronts:

- Board corporate governance; and
- Investment governance

Terms of reference

This Committee oversees the development, implementation and review of corporate governance policy for the Board.

The Committee:

- develops the Board's policy with respect to the Board's corporate governance responsibilities;
- reviews the continuing appropriateness of the Boards' Corporate Governance policy and recommends any changes to the Board;
- oversees the implementation of any policies adopted by the Board with respect to the Board's corporate governance; and
- reviews the Committee's operation and terms of reference annually.

Investment governance

The Committee oversees the development, implementation and review of investment governance policy for the Board.

The Committee is the point of communication between the Board and external parties with respect to investment governance and proxy voting matters.

The Committee:

- develops the Board's policy with respect to investment governance and proxy voting;
- reviews the continuing appropriateness of the Board's investment governance and proxy voting policy;
- oversees the implementation of any policies adopted by the Board with respect to investment governance and proxy voting; and
- oversees the development and conduct of appropriate linkages with other Australian superannuation funds, relevant international pension funds and other relevant organisations with respect to investment governance.

Membership

The Governance Committee is appointed by the Boards and usually comprises three members, at least two of whom are members of both the PSS and CSS Boards. The term of appointment of individual members of the Governance Committee is at the discretion of the Board. Other Board members are entitled to attend Committee meetings. The Committee meets as necessary, but in any event, not less than four times per year.

The Committee evolved in June 2002 from a working party established by the Board in December 2001. The Governance Committee was established by the Board in June 2002, adopting some Board corporate governance related functions previously undertaken by the Administration and Investment Committees. During the year the Committee (and its antecedents) comprised Ms Joy Palmer (Chair), Ms Winsome Hall and Ms Cathy Manolios.

Issues considered in 2001–02

During 2001–02 the Committee and its antecedents spent some time considering various aspects of the economic, environmental and social behaviour of companies. It ultimately concluded that there was a job to be done in risk management of companies in which the Board invests in respect of environmental, social and corporate governance practices. The Board decided it would be beneficial to engage an adviser to assist in this area. Issues arising during the year have included:

- The establishment of criteria for the selection of an adviser;
- Oversight of the tender process for an adviser;
- The establishment of a policy framework and subsequent development of a service agreement;
- Recommendations to the Board for the appointment of Westpac Investment Management (WIM) as provider of the Governance Advisory Service;
- Management of the relationship with WIM and implementation of the Governance Advisory Service, including the management of fees, revenue sharing, conflicts of interest, legal aspects of the service and a timetable for implementation;
- Development of a framework for risk assessment and the consideration of risks in relation to governance issues;
- Negotiation of an agreement with WIM and subsequent launch of the Governance Advisory Service;
- Development of research priorities and the adoption of a timetable for the delivery of that research;
- Development of a draft policy for the Boards with respect to proxy voting;
- Development of a draft Corporate Governance Policy; and
- Application of the Risk Assessment Framework.



Fund investment

Investment management

Investment structure

The Board has adopted a modular approach to funds management, dividing the portfolio up into its component parts, and appointing professional fund managers to invest each component. In some cases we have split the components further and divided them between a number of specialist managers.

Where relevant, asset classes are constructed to consist of core and specialist components. The core is constructed so as to provide a high probability of capturing market return whereas the specialist component allows for controlled diversity through a range of specialist active managers with different, yet complementary management styles.

Core assets are passively managed (with no active stock selection). Their purpose is to capture market returns by replicating (or tracking) the relevant asset class index. For instance, core holdings in the Australian shares asset class track the S&P/ASX 300 Accumulation index, excluding Listed Property Trusts.

The composition and weightings of the items that make up the index change slightly over time. The core asset managers must mirror those changes by adjusting the composition of their core portfolio. In that way, the earnings (or losses) on core assets over any period will mirror the increase (or decrease) in the index over the same period.

Active assets, as the name suggests, are actively managed. That is, the specialist fund managers that hold these assets must actively operate in the market, buying and selling them with a view to outperforming the relevant index.

The Board has also made provision for investment of up to ten per cent of total assets in non-traditional or alternative investments. Alternative investments include infrastructure, buy-out funds, opportunistic property and venture capital.

The Fund's exposure to international equities has regard to the inherent limits on return opportunities through investment solely in the Australian equities market and the opportunities provided by investing in the much larger world markets.

Investment arrangements

During the year, the Board reviewed and revised its arrangements for the management of the investment funds. The Board established an internal Investment Team, comprising of a Chief Investment Officer and four other investment professionals. The Investment Team is responsible for providing investment advice to the Board, implementing Board investment decisions, and monitoring, reviewing and reporting on investment performance to the Board.

The Board appointed external investment advisors to assist the Board and the Investment Team. Those advisors are:

- on investment strategy – Towers Perrin Australia Pty Ltd;
- on manager selection and monitoring, and alternative investments excluding Australian private equity – JANA Investment Advisors Pty Ltd; and
- on Australian private equity investments – Wilshire Australia Pty Ltd.

Custodial services

The Fund's master custodian is Chase Manhattan Bank. Its custodial function in relation to investment management includes settlement of trades, physical custody and safekeeping of securities, collection of dividends, and account preparation. Chase Manhattan Bank receives all moneys available for investment from ComSuper, and allocates them on the advice of the Investment Team, to investment managers in accordance with the mandates set down by the Board. Chase Manhattan Bank also holds (but does not own) the assets which comprise the Fund; collects and disburses dividends; maintains consolidated accounts and tax records for the Fund; and reports to the Board on individual fund manager and aggregated investment returns.

Investment managers

All investment managers are paid a fee which is generally based on the value of assets under their control. The fee reflects the investment costs applicable to each particular sector, and the investment style (i.e. active or passive) employed by each manager.

Table 1: The Board's fund managers at 30 June 2002

Asset class	Investment managers
Australian Shares	
Core	Colonial First State Investments Ltd
Specialist	Balanced Equity Management Pty Limited Perpetual Asset Management Limited Westpeak Investment Advisors (Australia) Limited
Direct	Jupiters Limited
Alternative	Various (21 managers/investments)
Developed International Shares	
Core	Vanguard Investments Australia Limited
Specialist (Global) Specialist (USA)	Wellington Management Company LLP Westpeak Investment Advisors (Small Cap) Westpeak Investment Advisors (Enhanced S&P 500)
Alternative (USA)	Various (3 Managers)
Specialist (UK/Europe)	ABN AMRO Asset Management (Australia) Limited Friends Ivory & Sime Merrill Lynch Investment Management plc
Specialist (Japan)	JP Morgan Investment Management Inc Schroder Investment Management (Australasia) Limited
Currency Overlay	Pareto Partners
Emerging Markets International Shares	
Specialist (emerging markets)	Blairlogie Capital Management Deutsche Asset Management Limited Paribas Asset Management Limited
Australian Bonds	
Core	Colonial First State Investments Ltd Superannuation Members Home Loan Schemes
High Yield Debt	
Specialist	Wellington Management Company LLP Loomis, Sayles & Company, LP
Currency Overlay	Pareto Partners
Property	
Specialist (Australian)	Colonial First State Investments Ltd
Alternative (Australian)	Various (3 managers)
Alternative (International)	Various (3 managers)
Absolute return (hedge) Funds	
Specialist	Financial Risk Management Harris Associates LP
Currency Overlay	Pareto Partners
Cash	
Cash	Colonial First State Investments Ltd

Investment objectives

With the accumulation part of members' total benefits tied to the investment performance of the Fund, achieving a good return over the long term is clearly of vital importance. This is explicitly recognised in the objective that the Board has set for the Fund, which is: **to maximise the long-term real return of the Fund.**

Members' interests are best served by seeking to maximise real returns over the long term. However, managing shorter term volatility (that is, reducing the variation in annual crediting rates) is also important, particularly for members exiting from the Scheme.

The investment objectives of the Fund specify the target, or acceptable levels of portfolio risk and return. They are distilled from the characteristics of the scheme (including benefit design, reserving/crediting rate policy and liability position). The Board expects to achieve an average real return of 4.5 per cent per annum after tax and fees, which derives from a nominal return of 7.0 per cent per annum over the longer term.

Strategic review

During the year, the Board conducted a major review of its investment strategy. Major reviews generally are conducted once every three years (the last being in 1999). The purpose of a major review is to:

- assess the economic environment, political environment, market environment and other factors that may influence investment returns both in Australia and overseas;
- review the appropriateness of the Board's investment objectives for the Fund; and
- formulate an investment strategy to meet those objectives.

In developing the investment strategy for the Fund to achieve its objective the Board has adopted the following constraints, in order to manage the level of short-term volatility of returns:

- on average, nominal fund returns will be positive four years out of five;
- on average, the crediting rate will exceed the bank interest rate by one per cent or more, three years out of five; and
- not more than 25 per cent of the Fund's investments are to be invested in illiquid assets, with a minimum cash allocation of 2 per cent.

These criteria define the 'tolerable' level of volatility specified in the Fund's objective.

Strategic asset allocation

As a result of the review a new strategic asset allocation was adopted at the end of June 2002. The following tables set out the former strategic asset allocation (which applied throughout the year), and the new strategic asset allocation, which will apply going forward.

Table 2: Former Strategic Asset allocation

Asset class	Asset Allocation
Australian shares	30%
International shares	42% (50% hedged)
Emerging markets international shares	5%
Australian Bonds	8%
High yield debt	3%
Property	10%
Cash	2%

Table 3: New Strategic Asset allocation

Asset class	Asset Allocation
Australian shares	30%
International shares	25% (40% hedged)
Australian Bonds	13%
International Bonds	15%
Absolute return (hedge) Funds	5%
Property	10%
Cash	2%

Work will be carried out to transition the Fund from the former to the new strategic asset allocation during the 2002–03 year.

Events during the year

Apart from the major strategic review and the changed investment arrangements described above, a number of other changes were made during the year. These changes are described over the page.

Alternative Investments

The Board continued to build the Fund's exposure to alternative investments during the year. Commitments were made to a number of new Australian private equity funds. Some of the funds previously committed to Australian private equity, Australian infrastructure, overseas private equity and overseas property were drawn down. At the end of the year, the size of the alternative investments program was \$251.8 million across 56 managers/investments (just under 5 per cent of the total Fund).

Jupiters Limited

During the year, the Fund's substantial holding in Jupiters Limited Founders' shares was de-founded. This meant that the Fund no longer required approval from the Queensland Government, Jupiters Limited and other Founder Shareholders in order to sell any or all of those shares. At the same time, the Fund sold half of its Founders' shares back to Jupiters Limited.

Hedge Funds

During the year the Board made further progress in its research into hedge funds and its search for appropriate hedge fund managers. An initial investment in two hedge fund of funds vehicles totalling approximately one per cent of the Fund was made at the end of January 2002. In deciding on which vehicles to invest in, the Board was focused on investments at the more market neutral, lower risk end, rather than the higher risk end.

Fund performance

The past financial year was a difficult one for the Fund. The Fund had more than 40% of its assets invested in international equities in developed countries and this asset class fell in value by about 21%. This was the major factor behind the Fund's disappointing return of -5.1% for the year, after tax and fees.

Despite the negative return recorded this year, the Fund's longer term investment performance remains solid. Over the last five years the Fund has returned an earning rate of 6.3% p.a. (crediting rate of 8%), compared with the average inflation rate of 2.8% p.a. over this period. Over ten years the Fund has returned an earning rate of 8.1% p.a. (crediting rate of 8.4%) compared with average inflation of 2.5% p.a.

Performance by asset class

Australian Shares

The Australian share market held up well through most of the year in the face of weak international equity markets, but softened late in the year to record a return of -4.7% for the year as a whole. The Fund's Australian equity investments did better than this to return -1.2%. This better than market performance reflected some value added by the Fund's active Australian equity managers, very good performance from the Fund's strategic investment in Jupiters and better performance from the Fund's private equity and infrastructure investments.

International Shares–Developed Markets

International equity markets were weighed down by a number of negative influences, including security concerns in the wake of the September terrorist incidents, political tensions in the Middle-East, disappointing corporate profits, corporate governance issues (particularly in the US) and doubts about the sustainability of the economic recovery that was underway. The situation was exacerbated for Australian dollar based investors by the rise in the value of the Australian dollar against most currencies, which translated into a fall in the Australian dollar value of investments denominated in foreign currency.

The Fund's international equity investments in developed markets returned -17.6%, somewhat better than the market return of -21.0%. The major factor behind this better than market result was the decision to hedge all of the Fund's foreign currency exposure in this asset class late in 2001. This protected the Fund against most of the negative valuation impact that flowed from the rise in the value of the Australian dollar during the year. The Fund's active investment managers also did better than the market in this asset class.

International Shares–Emerging markets

Emerging international equity markets were hurt by the fallout from the September terrorist incidents early in the year but then re-bounded strongly in the following six months. Late in the year, however, they were caught up in the general weakness of developed equity markets and finished the year showing a return of -8.3%. The Fund's active managers did better than the market, resulting in the Fund return of -6.4% in this asset class.

Australian Bonds

Despite a rise in official short term interest rates over the year and a relatively robust Australian economy, the Australian Bond market delivered solid returns in 2001–02. The Fund's investments returned 5.9%, just below the market return of 6.2%.

High Yield Debt

The high yield debt market produced a small negative return for the year of -1.7%. This result reflected concerns late in the year about corporate profitability and governance issues in the US. The Fund's high yield holdings under-performed the market to deliver a return of -6.1%. This disappointing result led the Board to terminate one of its two active managers in this asset class during the year.

Hedge Funds

The Fund invested 1% of its assets with two hedge 'fund-of-funds' in late January 2002. For the five months that this investment was held in 2001–02 it returned 2.4% (about 5.9% p.a.). This result was reasonably encouraging, given that over this period international equity markets fell by more than 15%.

Property

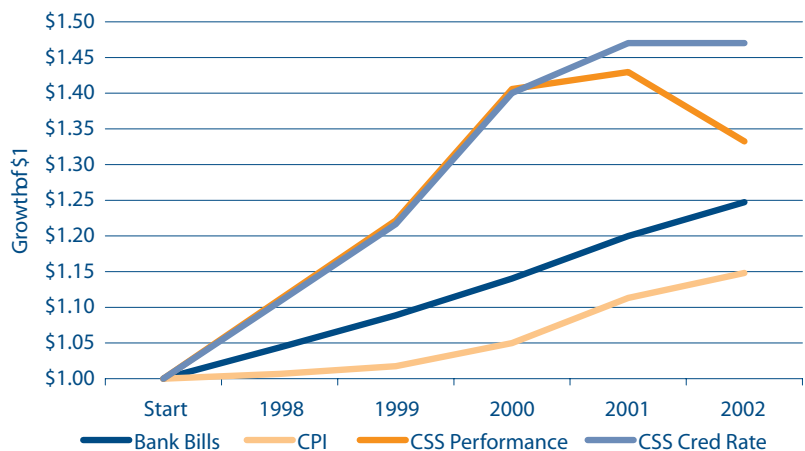
The Australian property market returned a solid 9.9% in 2001–02. The Fund's property investments did a little worse than this in returning 7.7%. This was the result of a fall in the Australian dollar value of the Fund's small international property portfolio and a small underperformance by the Fund's Australian property managers.

Table 4: CSS Fund performance 2001–02 (individual asset classes quoted before tax and fees; total fund quoted after tax and fees)

Sector	Holdings at	Holdings at	Proportion of Fund %	One-year performance	
	30 June 01 \$m	30 June 02 \$m		Portfolio %	B'mark* %
Australian shares	1 761.4	1 473.3	27.8%	-1.2%	-4.7%
Developed int'l shares	2 230.4	1 926.4	36.4%	-17.6%	-21.0%
Emerging markets int'l shares	278.2	236.4	4.5%	-6.4%	-8.3%
Debt	458.5	414.9	7.8%	5.9%	6.2%
High yield debt	200.5	153.8	2.9%	-6.1%	-1.7%
Property	891.2	895.8	16.9%	7.7%	9.9%
Hedge funds		50.1	0.9%	2.4%	
Cash	126.5	148.5	2.8%	4.5%	4.7%
Total fund	5 946.7	5 299.2	100.0%	-5.1%	-8.4%

- * The benchmarks used for the asset classes were:
- Australian shares – S&P/ASX200 Accumulation Index
 - Developed international shares – Morgan Stanley Capital International World index (ex Australia) with net dividends reinvested, in Australian dollars (50% hedged)
 - Emerging markets international shares – Morgan Stanley Capital International Emerging Markets Free Index with gross dividends reinvested in Australian dollars (unhedged)
 - Debt – UBS Warburg Composite Bond Index
 - High yield debt – Merrill Lynch High Yield Master Index in Australian dollars (hedged)
 - Property – Mercer Australian Unlisted Property Index
 - Hedge funds – the CSS total fund benchmark
 - Cash – UBS Warburg Bank Bill Index
 - Total fund – composite of above (excluding hedge funds) weighted according to the Strategic Asset Allocation

Chart 2: Fund performance comparison over 5 years



Investment information

Information on investments can be found throughout this report. Further information can be obtained from:

Internet: www.css.gov.au
 Executive Unit,
 CSS Board
 PO Box 1907
 Canberra City ACT 2601
 Telephone: (02) 6263 6999
 Fax: (02) 6263 6900
 E-mail: secretary.csspss@csb.gov.au

Crediting rate and reserving policy

Crediting rate 2001–02

The crediting rate is the rate of interest that is credited to members' contributions and employer productivity contributions. The CSS Board declared a crediting rate of 0% per annum for the financial year 2001–02. This crediting rate was determined using a revised formula for crediting rates adopted by the Board in June 2001. The CSS earned -5.1% for the 2001–02 financial year after fees and taxes. The crediting rate of 0% per annum was declared in light of the legislative requirement that prohibits the declaration of a negative crediting rate.

Table 5: Annual crediting rates 1998–02

Financial year	Crediting rate (%)
1997–98	10.8
1998–99	9.8
1999–00	15.1
2000–01	5.0
2001–02	0.0
5 Year Average	8.0

Crediting rate policy

The CSS Board's investment objective is to maximise the long term real return of the Fund. The Board expects to deliver an average real return of 4.5% per annum after tax and fees, based on a nominal return averaging 7.0% per annum and an inflation rate averaging 2.5% per annum over the long term.

In developing the investment strategy to achieve this objective, the Board has adopted the following constraints in order to manage the level of short term volatility of returns:

- on average, nominal fund returns will be positive four years out of five;
- on average, the crediting rate will exceed the Bank Interest Rate by 1% or more in three years out of five; and
- not more than 25% of the Fund's investments are to be invested in illiquid assets with a minimum cash allocation of 2%.

The CSS Board's investment policy includes a reserving mechanism, which can be used to smooth fluctuations in crediting rates. The reserve gives effect to the legislative requirement that no negative crediting or exit rates may be declared, even when the investment performance has been below zero.

The reserve is a notional amount only, which reflects the difference between total member equity and actual fund size. In years with high returns, part of the investment earnings are held back thereby reducing the rate credited to members. In years with lower returns, the amount held back is used to top up the interest rate credited to members, thus smoothing crediting rates over time. If returns are negative and there is no reserve available then the Fund declares a zero crediting rate and goes into a negative reserve situation. Future earnings would then be used to bring the reserve back to zero.

The use of this mechanism ensures that members receive their full benefit entitlements, regardless of the time of their exit from the Scheme.

The crediting rate formula takes into account the actual earning rate of the Fund, a target rate of bank interest plus 1% and the level of the reserve (the reserve will generally fall within the range of $\pm 5\%$ of the Fund).

The following is a summary of the impact of the Board's reserving policy.

Where the reserve is positive:

- if the earning rate exceeds the target rate, the crediting rate will be the earning rate less a proportional transfer to bolster the reserve; and
- if the earning rate is less than the target rate, the crediting rate will be the earning rate plus the reserve percentage (subject to the minimum crediting rate being zero and the maximum crediting rate being the target rate.)

Where the reserve is negative:

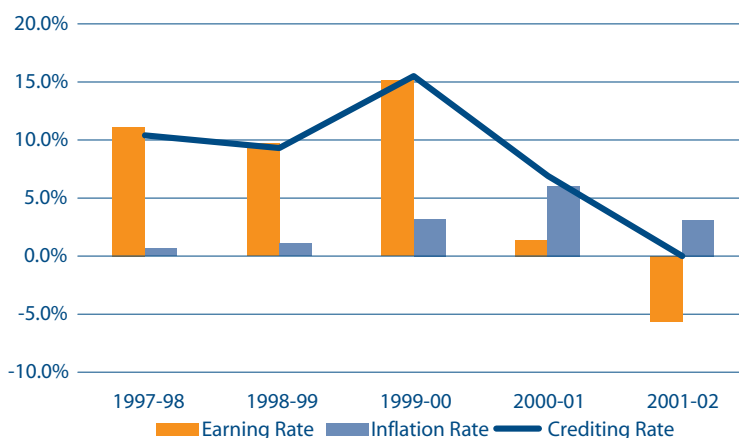
- if the earning rate exceeds the target rate, the crediting rate will be the earning rate less a proportional transfer to bolster the reserve; and
- if the earning rate is less than the target rate, the crediting rate will be the earning rate (subject to the minimum crediting rate being zero);

The reserve is calculated as the difference between the net assets of the Fund and the value of the funded entitlements to be included in member annual information statements. The reserve is estimated to represent -\$301m or -5.6% of the CSS Fund at 30 June 2002.

Reserve opening balance at 30 June 2001	\$12.4m
Earnings on opening balance	(\$0.7m)
Allocation to members	(\$312.8m)
Reserve closing balance at 30 June 2002	(\$301.1m)

To ensure fairness for all members, reserves will be replenished as quickly as possible with crediting rates remaining at zero until this is achieved.

Chart 3: Crediting rates compared with earning rates and inflation rates 1998–2002



Exit rate

When a member leaves the Scheme, an exit rate of interest is applied to cover the period between the date of the last annual crediting rate and the member's date of exit. The crediting rate formula applies to exit rates, however, the earning rates used are based on an adjusted rate, which is calculated by using the actual earning rate for the financial year to date plus the target rate for the remainder of the year.

Table 6: Exit rates declared in 2001–02

Effective date	Exit rate (annualised)
10 July 2001	5.2%
17 August 2001	3.4%
11 September 2001	0%
10 October 2001	0%
9 November 2001	0%
11 December 2001	0%
10 January 2002	0.7%
11 February 2002	0.2%
11 March 2002	0%
10 April 2002	1.2%
9 May 2002	0%
12 June 2002	0%

Note: Each new exit rate replaces the previous one.

The Trustees retain the right to change the timing of exit rate determinations and adjust the methodology used to calculate the rate as appropriate to the circumstances of the Fund at any particular time. The Board exercised this right during the year where Fund returns fluctuated significantly.



Account maintenance

The maintenance of CSS contributor accounts is a major function provided by the Board’s administrator (ComSuper). The Trustees set the standards of performance for ComSuper in its delivery of services to members for these areas of activity, and the Trustees also monitor the administrator’s performance through regular reports on all main activities. This process is also facilitated by an effectiveness review undertaken jointly by the Board and ComSuper during the course of the financial year.

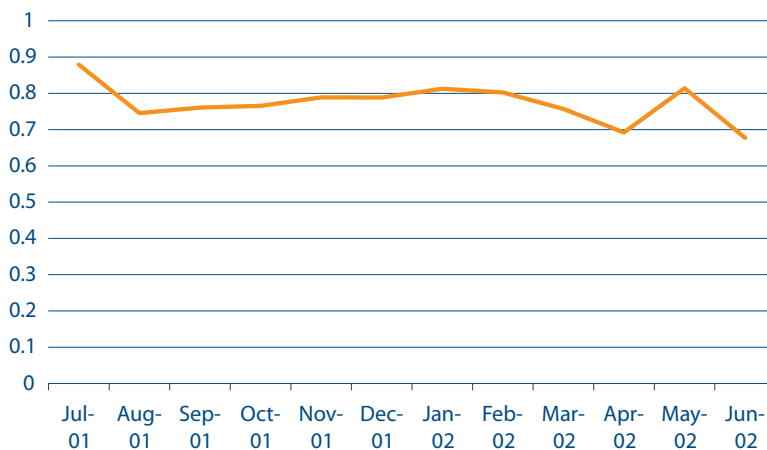
In 2001–02 the Fund received \$153m in member contributions and \$49m in productivity contributions.

Collection and recording of member information

Member information is reported electronically through interfaces with employer payment systems.

SERVICE	
ComSuper (the Board’s administrator) maintains records of Scheme contributors to allow, among other things, the accurate and timely publication of member statements, the accurate and timely payment of benefits to members, and to facilitate reconciliation against Fund accounts;	
STANDARD	OUTCOMES
An unqualified audit report in respect of the contributions system. Accuracy and timeliness as assessed by the data quality index (DQI) of 0.7 or greater.	Standard met for contributions system. The DQI standard was met or exceeded in each month during the reporting period except for April and June 2002, due to difficulties with data from two large employers.

Chart 4: Data quality index (DQI) 2001–02



Note: The data quality index is derived from measures of the number of entries reported that do not produce an error and the number of member transactions received and processed within the standard of ten days of the relevant payday.

Collection banking, recording and monitoring of contributor remittances

Member and employer productivity contributions for CSS members are remitted fortnightly and paid to the Board’s bank account.

In 2001–02 the Fund received \$153m in member contributions and \$49m in productivity contributions. Benefits paid from the Fund during the year totalled \$531m, giving a net contributions outflow of \$331m for 2001–02.

At 30 June 2002, the CSS had 40 015 contributing members. Table 7 shows the number of contributors by gender.

SERVICE

ComSuper

- maintains appropriate banking arrangements for the payment of contribution remittances into the Fund;
- lodges moneys with the Board’s investment custodian for investment by investment managers to the extent that moneys held in the Board’s bank account are not required for the purpose of the payment of benefits and other expenses;
- maintains appropriate accounting systems for the recording of contribution remittances received; and
- monitors the collection of contribution remittances and pursues any late remittance of contributions with employers and collect penalty interest where appropriate.

STANDARD

Contribution remittances to be deposited into the Board’s bank account on the same day as received.

Posting of member contributions to ComSAS data base to be completed within 10 working days.

Monitor timeliness of contribution receipts from major employers to ensure contribution remittances are received by the due date

Daily reconciliations will be undertaken to ensure that all moneys received are banked.

Unallocated money accounts
 Entries : all accounts not to exceed 2000
 Balance: not to exceed \$2 million

OUTCOMES

Met on all occasions

Met on all occasions

All major employers remitted contributions on or before the due date

Met on all occasions

Met on all occasions

Table 7: Contributor membership 1998–2002

Year ending	Male	Female	Total
30 June 1998	42 255	18 452	60 707
30 June 1999	37 242	16 383	53 625
30 June 2000	33 524	15 028	48 552
30 June 2001	29 858	13 693	43 551
30 June 2002	27 287	12 728	40 015

Maintenance of proper accounts and records

SERVICE	
<p>ComSuper (the Board’s administrator) ensures that adequate systems, procedures and controls are in place to meet the administration and reporting requirements of the CSS Act, and associated legislation.</p> <p>At the direction of the Audit Committee of the Boards, ComSuper also arrange for an independent audit of those systems and controls to be undertaken from time to time.</p>	
STANDARD	OUTCOMES
<p>Unqualified external audit reports, and assessed via internal audit program</p>	<p>Standard Met</p>

Employer support

SERVICE	
<p>ComSuper (the Board’s administrator):</p> <ul style="list-style-type: none"> undertakes a range of initiatives, including system improvements, training of personnel staff and information dissemination, to improve employers’ understanding of the Schemes and their various responsibilities, so that they are reliable sources of superannuation information for their staff and so that data submitted to ComSuper on behalf of their employees is accurate. The effectiveness of these measures is gauged through surveys of employers and through ongoing monitoring of error volumes by ComSuper systems. 	
STANDARD	OUTCOMES
<p>Effectiveness of relationship with employers will be measured against annual employer surveys and internal surveys of accuracy of data submitted to ComSuper</p>	<p>An employer survey was conducted May/June 2002 which reflected an effective relationship with most employers. Internal surveys of accuracy of data show an improvement in the overall accuracy and timeliness of data.</p>

Surcharge

The *Surcharge Contributions Tax (Assessment and Collection) Act 1997*, more commonly referred to as ‘the surcharge’, requires superannuation providers to report surchargeable contributions for all CSS members to the Australian Taxation Office (ATO) on an annual basis. The intention of the legislation is to apply a tax on employer-financed contributions, specifically targeted at high-income earners, and imposes a surcharge of up to 15% on a member’s surchargeable contributions, provided the member’s adjusted taxable income is greater than the surcharge threshold.

The CSS is classed as an unfunded defined benefit scheme for the purposes of the legislation. In order to have a basis on which to calculate surchargeable contributions, the services of the Australian Government Actuary were employed to develop Notional Surchargeable Contributions Factors.

On receipt of surchargeable contributions information, the ATO matches the data with taxable income. If the taxpayer’s adjusted taxable income exceeds the threshold, the ATO determines the amount of surcharge debt applicable to the member and reports this to ComSuper and the member.

Table 8: Summary of Surcharge Activity 2001–02

	Number*
Surcharge debts reported by the ATO	16 069
Surcharge debt payments received from members	1 618
Debts recovered from member benefits	764

* Further details are given in the Financial statements - see page 93.

Contributor communications

SIS requirements

As a regulated fund under the *Superannuation Industry (Supervision) Act 1993* (SIS) the CSS must comply with all the information disclosure standards set out in the SIS Act and Regulations. One of the major requirements is to maintain ongoing communication with scheme members, giving assurance that the superannuation industry operates in a fair, honest and open manner.

The contact centre

CSS members are encouraged to seek information about their superannuation benefits. The most popular form of request remains the telephone, although a marked increase in email enquiries was noted during the year. ComSuper's Contact Centre answered 166 423 telephone calls, responded to 15 750 emails and prepared 6 537 written replies to member's enquiries. As well 127 member seminars were conducted in various locations throughout Australia, which were attended by 4 253 members.

SERVICE

At the direction of the Boards, ComSuper undertakes a communications program aimed at improving members' knowledge and understanding of the Schemes so that they are in a position to make informed decisions at times when these need to be made. This includes the range of communications required by SIS and a recognition of the particular needs of members.

ComSuper provides a range of seminars broadly in accordance with demand, issues member information statements and makes available various scheme publications both in hard copy and electronic format.

ComSuper also provides a range of communications to members on benefit entitlements and queries relating to the general administration of the schemes in writing, over the phone and by electronic means. ComSuper will continuously seek ways to improve these communications.

STANDARD

Increased knowledge and understanding of the schemes by members as gauged by surveys.

Also, where applicable, ComSuper provides relevant information within the time frames imposed by SIS and generally speaking will significantly better those times. Where no statutory time frame exists, ComSuper provides the required information or service as soon as possible but in any event, no later than 20 working days after the request is received.

Written enquiries for benefit estimates:
 85% in 10 working days
 95% in 20 working days
 > 20 working days reported by administrator

OUTCOMES

All SIS standards were met during the year

Standard met - performance achieved
 90% in 10 working days
 99% in 20 working days

Email enquiries / requests for benefit estimates: 95% in 1 working day 100% in 5 working days	80% in 1 working day - Standard not met* 100% in 5 working days - Standard met
Member Statements available from web site: by 8 September 2001	Standard Met
Member Statements - Deliver outputs as identified in the project plan agreed with the executive unit	Standard Met
Manually Generated statements: by 31 October	Manual Statements were completed on the 20th December 2001
Replacement member statements: within 10 days of request	Standard Met
Telephone abandoned rate: Average of 3% or less over a month	*Standard not met Abandoned rate of 5%
Telephone average speed of answer: Average of 30 seconds or less over a month	*Standard not met Average speed of answer - 84 seconds
Web site changes: Critical updates - 1 working day Routine updates - 95% in 5 working days, > 5 working days reported by administrator	Standard met on all occasions
In addition, ComSuper undertakes in relation to the services listed below, that:	
i-Estimator : be available by 15 September	Standard Met
Quality of generated correspondence: In meaningful and professional manner - fit for purpose assessed via a six monthly independent audit	Standard Met
Seminars: Provide as required or requested	Standard met on all occasions
Personal counselling in Canberra: Urgent - immediately Others - within 5 working days	Standard met on all occasions

*In the months of July (access number distribution) and September–October (Annual Member Statement mailout) the Contact Centre experienced greatly increased demand for member services, which resulted in standards not being met during the reporting period.

Chart 5: Commonwealth emails processed

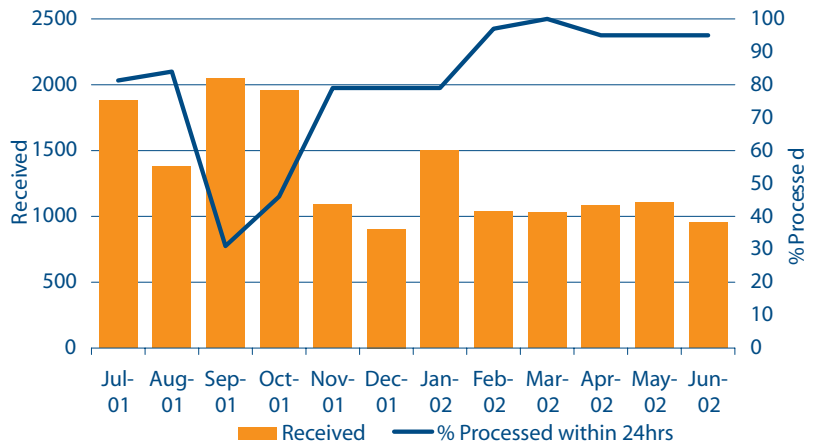


Chart 6: Commonwealth telephone calls

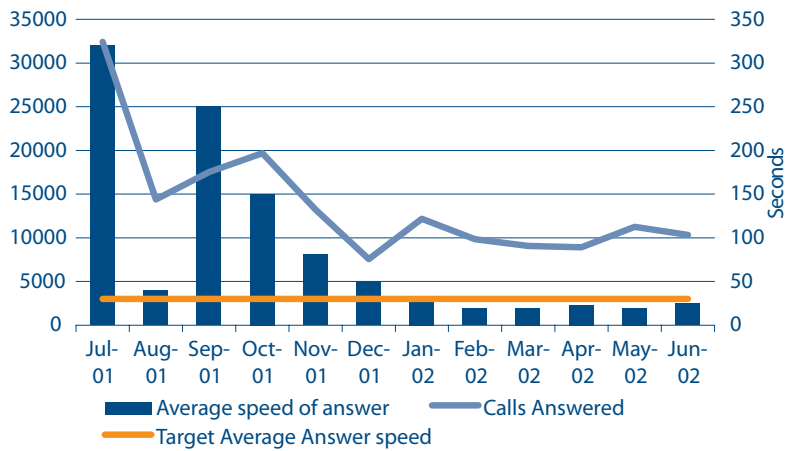
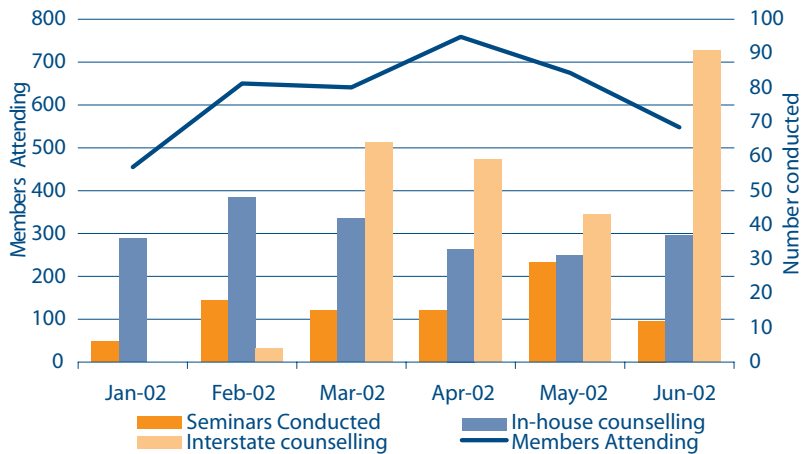


Chart 7: Information seminars and personal counselling 2001–02

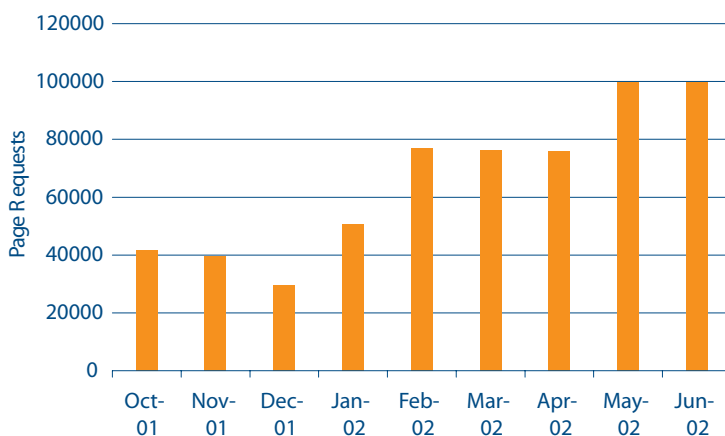


CSS on the Internet

As mentioned previously under the activities of the Communications Committee the Board successfully introduced a new CSS web site during the year. Internet services for the CSS were previously provided by the Board’s administrator (ComSuper) under a blanket arrangement that covered all superannuation schemes administered by that organisation.

The following chart shows activity levels for the new site since its inception. In general terms, CSS member preference for superannuation information to be communicated in electronic format is growing in line with community trends, to the point where the web site has become a primary communications channel.

Chart 8: CSS web site hits 2001–02



Benefit payments

The CSS provides a range of benefits that are payable on:

- resignation, dismissal or annulment of appointment (the same benefit is payable in each case);
- age retirement;
- involuntary retirement (retrenchment/redundancy);
- invalidity retirement; and
- death.

Performance standards, as described below, are set for the processing of these benefits.

The rate of benefit applications processed ComSuper in 2001–02 eased slightly compared with the numbers processed in the 2000–01 financial year. ComSuper received 6 738 benefit applications during the year (compared with 6 932 in the previous financial year), representing an average of around 560 applications per month throughout the year.

Table 9: Exits by type 2001–02

Type	Number
Age (including Preserved age claims)	3 111
Retrenchment (Involuntary and sale of assets)*	1 919
Invalidity (includes Preserved invalidity)	147
Death	27
Resignation and other	1 534
Total	6 738

*including 87 Sale cases (73 in the previous year)

SERVICE

ComSuper will process all applications for benefits in a timely manner and in accordance with the CSS Act.

STANDARD

Accuracy as assessed by six monthly independent reports. In particular, ComSuper will:

Processing time	Proportion processed
within 10 working days	80%
within 20 working days*	97.5%

Where all data is available, average processing time	less than 6 working days over a month
--	---------------------------------------

Including those cases where more data is required, average processing time	12 working days over a month
--	------------------------------

OUTCOMES

Processing time	Proportion processed
within 10 working days	96%
within 20 working days*	99%

Average processing time, where all data is available	3.1 working days
--	------------------

Average processing time, where more data was required	6.4 working days
---	------------------

Chart 9: Commonwealth benefit processing against standards, 2001-02

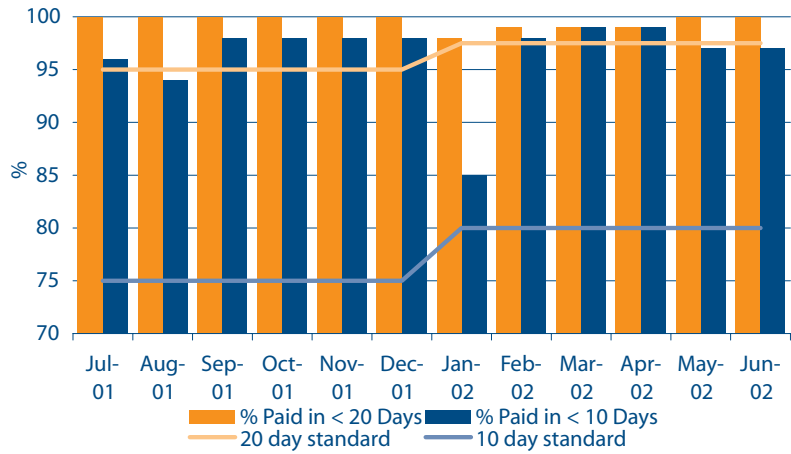
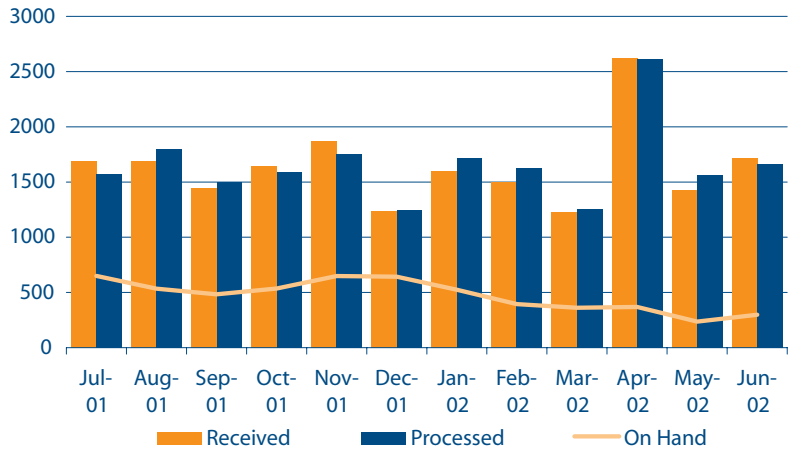


Chart 10: Applications received, processed and on hand, 2001-02



Processing of invalidity claims

Members who are totally and permanently incapacitated to the extent that they are unlikely to work again in a position for which they are reasonably qualified by education, training or experience (or could become so after retraining), may be retired on invalidity grounds and become entitled to payment of invalidity benefits. The invalidity retirement process is designed to ensure a thorough assessment of a person's condition and to fully consider prospects of rehabilitation and/or retraining before the Board issues an invalidity retirement certificate.

During the year the Board, or a delegate, approved invalidity retirement for 100 per cent of applications considered.

Performance standards, as described below, are set for the processing of claims for invalidity benefits.

Pre-assessment payments

The legislation provides for pre-assessment payments to be made, to ensure that a person who is (or is likely to become) totally and permanently incapacitated is not left without income while his or her case is assessed.

Applications for the issue of an invalidity retirement certificate are normally made to ComSuper through the applicant's employer. Eligibility for pre-assessment payments will be routinely determined by ComSuper after consideration of medical evidence which must include a medical report completed by a Health Services Australia medical adviser (or other Board approved medical practitioner) who has examined the person and considers that the person is, or is likely to become, totally and permanently incapacitated.

During 2001–02, pre-assessment payments were approved in respect of 93 applicants. No applicants were refused pre-assessment payments on the ground that there was little likelihood that they would be unable to work again.

Assessment panel

The decision-making process requires the Board to engage an assessment panel, experienced in assessing invalidity claims for superannuation purposes, to help the Board determine whether a person is totally and permanently incapacitated. During 2001–02, assessment panel services were provided by Independent Claims Management Pty Ltd (ICM). Of the 135 cases considered by ICM, 124 were recommended for invalidity retirement, 5 were recommended to be refused and 6 cases were deferred for further consideration.

Board decisions

When all the necessary information is available, ComSuper is in a position to place the matter before the Board (or in certain circumstances to approve the invalidity retirement under delegation from the Board). At this time the Board is required to decide whether to approve the retirement and, if so, to issue a certificate having regard to:

- the advice of the panel; and
- the ‘practicality’ of the person being able to find a job for which he or she is qualified or could become qualified after retraining.

During 2001–02, 124 invalidity retirement certificates were approved. Of those, 11 were fast-tracked by the invalidity assessment panel in less than four days.

SERVICE

In assessing claims for invalidity retirement, ComSuper ensures due process is followed, that claims are processed expeditiously, that legislative requirements are met and that guidelines issued by the Boards are followed

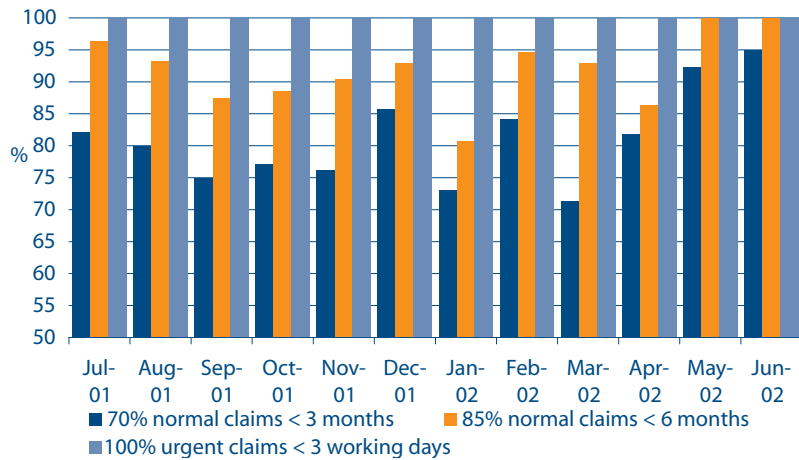
STANDARD

Very urgent invalidity claims	100% in 3 working days
All other invalidity claims	70% in 3 months 85% in 6 months > 6 months, reported by Administrator

OUTCOMES

Very urgent invalidity claims	Standard met on all occasions
All other invalidity claims	Standard met on all occasions

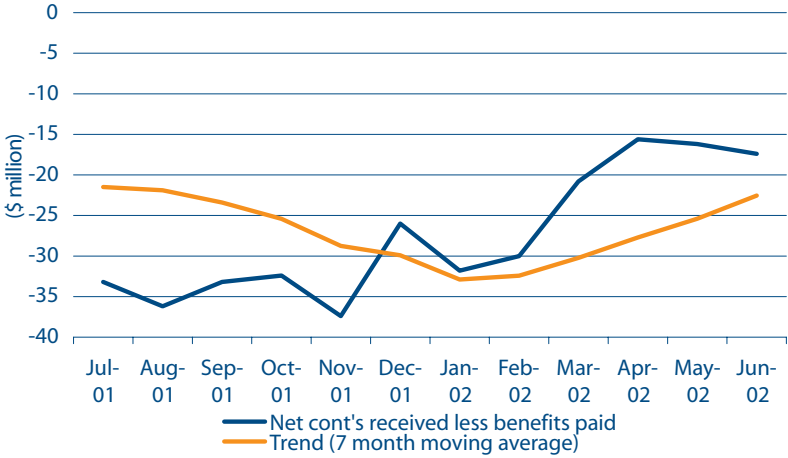
Chart 11: Time taken to determine Invalidation Cases



Accounts, records and funding of benefit payments

SERVICE	
ComSuper <ul style="list-style-type: none"> liaises with the Board’s investment custodian to ensure that funds are available to meet benefits and other payments from the Fund as they fall due; and maintains proper accounts and records in respect of benefits paid. 	
STANDARD	OUTCOMES
Maintain sufficient levels of liquidity in the Boards’ bank account to meet expected monthly benefit payments and ongoing costs related to the management of the funds;	Met on all occasions
Unqualified audit report	Unqualified Audit Report provided for 2000-01 and 2001–02
Summary reports of debt recovery activity against agreed guidelines to be provided	Met on all occasions

Chart 12: CSS Fund—contributions received less benefits paid—2001-02





Staff of the ComSuper Pensions Administration Section make fortnightly payments to pensioners and assist pensioners to understand their superannuation entitlements and maintain their pension accounts in accordance with the service standards agreed between ComSuper and the Board.

During the year Pensions Administration staff answered 106 052 telephone calls, responded to 2 294 emails and prepared 11 864 written responses to pensioner enquiries for the Commonwealth Schemes.

Information officers can be contacted by telephone (through a dedicated call centre), letter, facsimile or email. Pensioners with hearing impairments can use a special teletypewriter (TTY) facility. Advisory officers are available for personal counselling at ComSuper’s office.

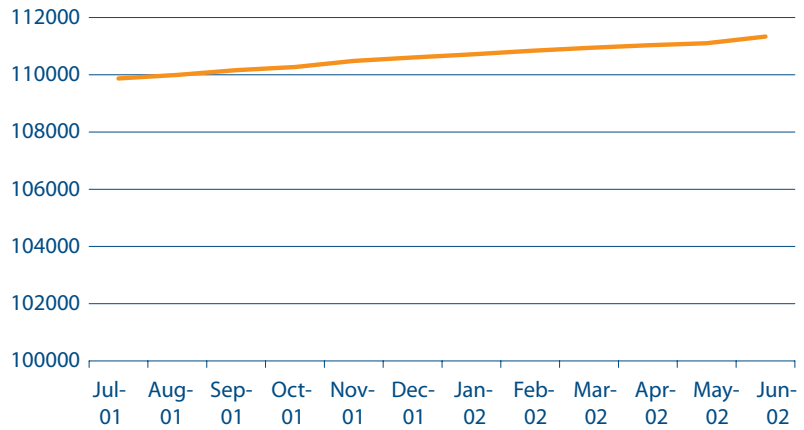
A section of the CSS web site has been designed to allow pensioners who use the Internet to get information about issues relating to the payment of their benefit.

Account maintenance

SERVICE	
<p>ComSuper maintains appropriate records and documentation of all persons eligible to receive a pension under the Rules. This includes the setting up of a new record when a pensioner commences, processing amendments to personal details, processing altered payment arrangements, processing cessations on death, where applicable commencing reversionary benefits following death, processing variations to child/student pensions, processing variations to invalidity pensions following reclassification and initiating recovery of overpaid pension when advice of death is delayed.</p>	
STANDARD	OUTCOMES
<p>An unqualified audit report in respect of the system used to maintain pensioner records. Variations to pensioner accounts accurate and timely as assessed via a six monthly independent audit. Commence all reversionary pensions on the next available payday following receipt of application subject to eligibility criteria being clearly met and subject to there being no counter claims.</p>	<p>Standard met on all occasions</p>

Pensions in force

Chart 13: Growth in CSS pensioner population 2001–02



At 30 June 2002, there were 111 256 pensions in force, an increase of about 2 per cent from the previous year (109 880).

Pensioner communications

SERVICE

ComSuper will, at the direction of the Board, provide a range of communications to pensioners to assist their understanding of the scheme, to facilitate enquiries and to facilitate changes to personal or payment details. This includes any communications that may be required by SIS.

In response to guidance from the Board, ComSuper will also seek to improve the quality and effectiveness of its communications with pensioners in part through regular reviews and in part through surveys of clients.

STANDARD

End of financial year pension advice and group certificates	Send out before first pension payday in July each year
Written enquiries	100% in 5 working days
Email enquiries	95% in 1 working day
	100% in 5 working days
Telephone abandoned rate	Average of 3% or less over a month
Telephone average speed of answer	Average of 30 seconds or less over a month

OUTCOMES

End of financial year pension advice and group certificates	The standard for the first payday in July 2001 and January 2002 processing was met. The standard for July 2002 was met but delays for some members occurred due to data problems associated with the introduction of the new pension payment system.
Written enquiries	100% Standard met
Email enquiries	95% Standard met
	98.4% Standard not met
Telephone abandoned rate	Average 1.25% Standard met
Telephone average speed of answer	Average 24 Secs Standard met

Chart 14: Pensioner telephone enquiries–Average speed of answer

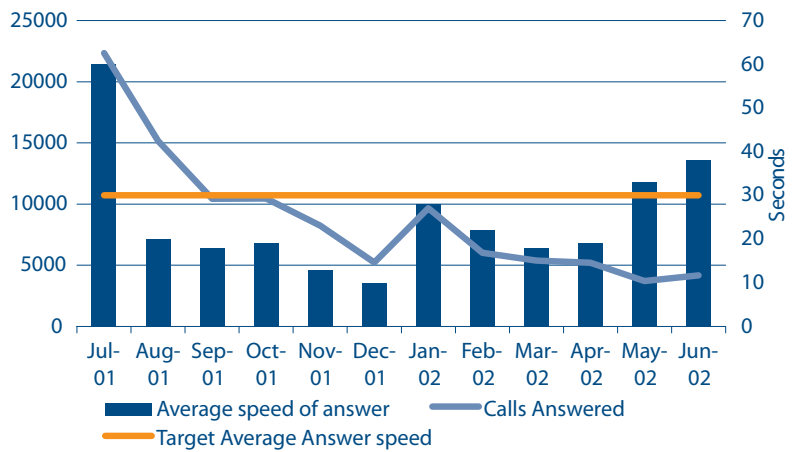
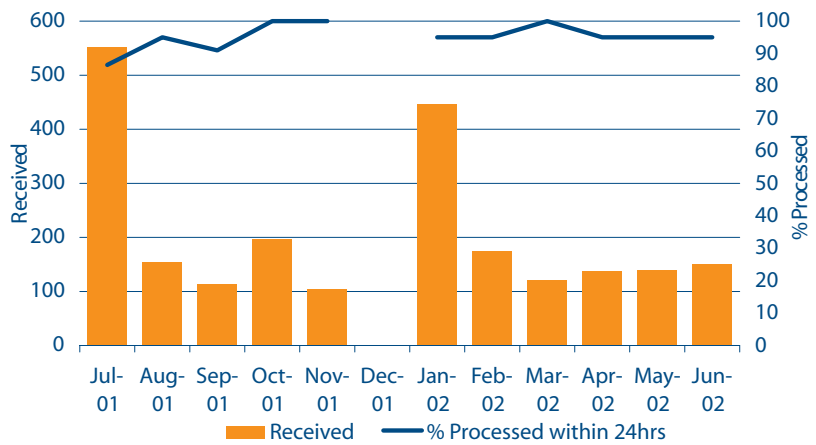


Chart 15: Pensioner emails received and processed 2001–02



Note: Data for December 2001 is not available.



Dispute resolution

Avenues of review

Decisions of the Board and its delegates are subject to internal reconsideration and external review. These processes are managed by ComSuper.

Internal reconsideration

A person affected by a decision of the Board or a delegate may apply in writing to have it reconsidered. No fee applies. If a person is still unhappy with the decision, further reconsideration may be sought but the application must be supported by evidence not previously known to the Board and a fee of \$150 is payable. If the appeal is successful or withdrawn, the fee is refunded.

Decisions are reconsidered on the basis of new evidence provided by the applicant or obtained by ComSuper. A request for reconsideration of a decision is usually referred to the Reconsideration Advisory Committee (RAC) after examination. The RAC comprises senior ComSuper officers: Mr Trevor Dockett; Mr Michael Carberry; and Mr Hugh Major. The RAC makes a recommendation that is taken into account by the Board in deciding whether to affirm, vary or set aside the decision. The Board can also refer a decision to the RAC on its own motion. Each applicant receives a comprehensive written statement of reasons for the Board's decision on reconsideration.

Requests for reconsideration are treated as complaints for the purposes of section 101 of the *Superannuation Industry (Supervision) Act 1993* (SIS) and should a person be unhappy with the Board's decision, the matter can be referred to the Superannuation Complaints Tribunal.

Applications received

Thirty-six applications for reconsideration were received, compared with 54 last year.

As in past years, although significantly down from last year (8 applications compared with 27) the single largest category concerned member late elections to preserve entitlements accruing from a previous period of contributory service.

Of the remaining cases received, seven concerned benefits payable to spouses or children, five concerned provisions for reducing invalidity benefits on medical grounds, four concerned approval of retrospective invalidity, with the balance concerning various other entitlement provisions.

In view of the low numbers of requests the Board was satisfied with the high standard of decisions taken by delegates. The number of cases where it set aside or varied earlier decisions in favour of the applicant was 11 per cent and this was as a result of additional evidence rather than any obvious deficiency in the original decision.

Cases finalised

Fifty-six cases were finalised during the year, compared to 81 for the previous year.

SERVICE

ComSuper investigates requests for reconsideration of decisions of the Board or its delegates in a thorough, objective, and effective manner in accordance with any guidelines issued by the Board. ComSuper also does all things necessary to facilitate the expeditious processing of negligence claims against the Board according to procedures issued by the Board.

STANDARD

Processing of reconsideration requests	Proportion completed
within 6 months	45%
within 9 months	65%
within 12 months	90%
>12 months	reported by Administrator
Average processing time	9 months

ComSuper will process all negligence claims both objectively and expeditiously—as assessed by six-monthly independent audit report.

OUTCOMES

Over the twelve-month period all standards have been met.

Average processing time	6.4 months
-------------------------	------------

Performance indicator

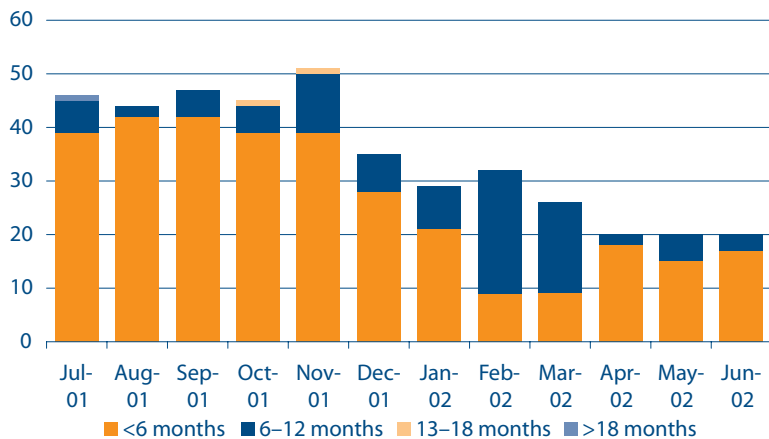
The service level standard agreed between ComSuper and the CSS Board with effect from 1 January 2002 sets standards of 45% of cases to be completed within 6 months, 65% of cases to be completed within 9 months and 90% of cases to be completed within 12 months. Over the 12 month period all three targets have been met.

Table 10: Reconsideration applications received and outcomes 2001–02

	2000–01		2001–02	
	Delegate's decisions	Board's decision	Delegate's decisions	Board's decision
Brought forward	50	8	30	1
Received	52	2	31	5
Withdrawn or lapsed	14	2	10	0
Decisions affirmed	38	4	34	5
Decisions varied	1	2	0	0
Decisions set aside	19	1	6	1
Resolved	72	9	50	6
Carried forward*	30	1	11	0

*The cases carried forward were under investigation by ComSuper or with the RAC.

Chart 16: Age analysis of Commonwealth reconsideration cases



External review

SERVICE	
ComSuper undertakes to do all things necessary to facilitate the expeditious processing of matters that go to the Superannuation Complaints Tribunal, the Federal Court and other jurisdictions such as the Human Rights and Equal Opportunity Commission (HREOC).	
STANDARD	OUTCOMES
Process all external cases both objectively and expeditiously as assessed by six monthly independent audit report.	Standard Met

Superannuation Complaints Tribunal

As a result of amendments to the *Superannuation Act 1976* introduced by the *Superannuation Legislation Amendment Act 1994*, virtually all decisions previously taken by the Commissioner for Superannuation under the *Superannuation Act 1976* have, since 1 July 1994, been taken by the Board.

On 29 June 1995 the CSS Board elected to become a regulated superannuation fund for SIS purposes. As a regulated fund any decision taken by the CSS Board can be the subject of a complaint before the Superannuation Complaints Tribunal (SCT), which was established under the *Superannuation (Resolution of Complaints) Act 1993* (SRC Act).

In early 1998 the Full Federal Court handed down several decisions which brought into question the power of the SCT to review decisions of superannuation trustees under the SRC Act.

The Commonwealth Attorney-General appealed all of the Federal Court's decisions to the High Court. While the appeal was pending, the SCT ceased to review decisions of superannuation trustees.

On 17 June 1999, the High Court unanimously upheld the power of the SCT to review decisions of trustees of regulated superannuation funds. Following the High Court decision, the SCT has resumed its review of trustee decisions which are the subject of complaints before the SCT.

Complaints lodged with the SCT

During the year, seventeen complaints were lodged with the SCT against the CSS Board and twenty-four were carried over from the previous year. Twenty cases were completed during the year. Four decisions of the Board were affirmed and eight decisions were set aside. One complaint was dismissed for lack of jurisdiction; three were withdrawn by the complainants; and four complaints were treated by the SCT as withdrawn on the basis that the complaints were misconceived or were lacking in substance. Twenty-one SCT complaints remain outstanding as at 30 June 2002.

Federal Court

Decisions taken in the administration of the CSS are subject to review by the Federal Court under the *Administrative Decisions (Judicial Review) Act 1977* (the AD(JR) Act). Appeals to the Federal Court may be based on any of the legal grounds set out in sections 5, 6 and 7 of the AD(JR) Act, including:

- errors of law;
- improper exercise of power;
- denial of the rules of natural justice
- failure to observe procedures; or
- unreasonable delay in making a decision.

The ambit of decisions which may be reviewed under the AD(JR) Act includes decisions made by the Board and its delegates. During the year there were no CSS cases reviewed by the Federal Court under the AD(JR) Act.

Claims against the Board

During the year, one claim for compensation was considered by a delegate of the Board arising from a dispute about the claimant's benefit entitlement. Liability was accepted and the matter was settled by way of payment to the claimant of an indexed pension of \$4 400 per annum.

Complaints and enquiries

The Board has established formal procedures for dealing with member complaints received in accordance with Section 101 of the *Superannuation Industry (Supervision) Act 1993*.

SERVICE
ComSuper will maintain systems for dealing with SIS registered complaints and representations made by Parliamentarians and the Ombudsman.
ComSuper will also maintain systems for dealing with requests under the <i>Freedom of Information Act 1982</i> .

STANDARD	OUTCOMES						
ComSuper will respond to:							
<table border="1"> <tr> <td>SIS complaints</td> <td>90% within 15 working days >15 working days reported by Administrator</td> </tr> </table>	SIS complaints	90% within 15 working days >15 working days reported by Administrator	<table border="1"> <tr> <td>SIS complaints</td> <td>A substantive response was made to 76% of SIS registered complaints (excluding requests for internal review) within 15 working days</td> </tr> </table>	SIS complaints	A substantive response was made to 76% of SIS registered complaints (excluding requests for internal review) within 15 working days		
SIS complaints	90% within 15 working days >15 working days reported by Administrator						
SIS complaints	A substantive response was made to 76% of SIS registered complaints (excluding requests for internal review) within 15 working days						
<table border="1"> <tr> <td rowspan="2">Parliamentarian and Ombudsman representations</td> <td>90% within 15 working days</td> </tr> <tr> <td>100% within 25 working days</td> </tr> </table>	Parliamentarian and Ombudsman representations	90% within 15 working days	100% within 25 working days	<table border="1"> <tr> <td rowspan="2">Parliamentarian and Ombudsman representations</td> <td>64% within 15 working days</td> </tr> <tr> <td>94% within 25 working days Overall two requests (6%) fell outside the primary standard.</td> </tr> </table>	Parliamentarian and Ombudsman representations	64% within 15 working days	94% within 25 working days Overall two requests (6%) fell outside the primary standard.
Parliamentarian and Ombudsman representations		90% within 15 working days					
	100% within 25 working days						
Parliamentarian and Ombudsman representations	64% within 15 working days						
	94% within 25 working days Overall two requests (6%) fell outside the primary standard.						
<table border="1"> <tr> <td>Freedom of Information</td> <td>90% within 5 working days 100% within 7 working days</td> </tr> </table>	Freedom of Information	90% within 5 working days 100% within 7 working days	<table border="1"> <tr> <td>Freedom of Information</td> <td>All FOI requests were processed within 7 working days</td> </tr> </table>	Freedom of Information	All FOI requests were processed within 7 working days		
Freedom of Information	90% within 5 working days 100% within 7 working days						
Freedom of Information	All FOI requests were processed within 7 working days						

Complaints and representations

During 2001–02, the Complaints Officer received 47 complaints and 33 parliamentary representations, with two complaints and one representation carried over from the previous year. This compared with 65 complaints and 16 representations made last year. Complaints and representations did not have a particular theme and covered issues such as queries about the annual information statement, queries about benefit estimates and interest rate. All complaints were able to be resolved within the legislative time frame.

ComSuper advised the Board that the shortfall in meeting the service level standards for complaints and parliamentary representations arose from a greater than usual number received in October and November 2001 which resulted in investigations being unable to be finalised for all such cases until the following month. Revised procedures were immediately implemented by ComSuper and for the remainder of the year the standards were met.

Table 11: Responses to complaints or ministerial/Ombudsman enquiries

	<15 days		16–30 days		31–90 days		>90 days	
	No.	%	No.	%	No.	%	No.	%
Complaints	37	76	9	18	3	6	-	-
Ministerials	21	64	10	30	2	6	-	-



Financial statements



**Commonwealth Superannuation Scheme (CSS)
Independent report by approved auditor to the Minister for Finance and
Administration**

(A) Financial Statements

Scope

I have audited the financial statements of the Commonwealth Superannuation Scheme (CSS) which includes the CSS Fund, for the year ended 30 June 2002. The financial statements comprise:

- Statement of Changes in Net Assets
- Statement of Net Assets
- Notes to and forming part of the Financial Statements

The trustee of the CSS Fund (CSS Board) is responsible for the financial statements. I have conducted an independent audit of the financial statements in order to express an opinion on them to you.

My audit has been conducted in accordance with Australian National Audit Office Auditing Standards which incorporate the Australian Auditing Standards, to provide reasonable assurance whether the financial statements are free of material misstatement. My procedures included examination, on a test basis, of evidence supporting the amounts and other disclosures in the financial statements, and the evaluation of accounting policies and significant accounting estimates. These procedures have been undertaken to form an opinion whether, in all material respects, the financial statements are presented fairly in accordance with Accounting Standards and other mandatory professional reporting requirements, so as to present a view of the CSS and the CSS Fund which is consistent with my understanding of its net assets and changes in net assets.

These Accounting Standards and other mandatory professional reporting requirements are those applicable in Australia.

The financial statements audit opinion expressed in this report has been formed on the above basis.

GPO Box 707 CANBERRA ACT 2601
Centenary House 19 National Circuit
BARTON ACT
Phone (02) 6203 7300 Fax (02) 6203 7777

Audit Opinion

In my opinion:

- (i) the financial statements are in the form agreed by the Minister for Finance and Administration in accordance with sub-section 161(1A) of the Superannuation Act 1976;
- (ii) the financial statements present fairly in accordance with applicable Accounting Standards and other mandatory professional reporting requirements the net assets of the CSS as at 30 June 2002 and the changes in net assets for the year ended 30 June 2002.

(B) Compliance

Scope

I have conducted tests in accordance with Australian National Audit Office Auditing Standards, which incorporate Australian Auditing Standards, as necessary to provide reasonable assurance whether the CSS Board has, in all material respects:

- a) complied with the relevant requirements of the following provisions (to the extent applicable) of the Superannuation Industry (Supervision) Act 1993 and Regulations:

sections 19(2), 19(3), 36, 65, 66, 67, 69-85, 86-93A, 95, 97, 98, 101, 103, 104, 105, 106, 107, 109, 111, 112, 113, 117, 118, 121, 122, 124, 125, 152, 153, 154, 163, 169;

regulations; 2.10(1), 2.13(1), 2.21(3), 2.33(2), 2.43(1), 3.10, 4.08(3), 5.08, 6.17, 7.04, 7.05, 9.09, 9.14, 9.29, 9.30, 13.14, 13.17, 13.17A; and

My procedures with respect to regulation 6.17 included testing whether amounts identified by the CSS Board as preserved and restricted non-preserved have been cashed or transferred only in accordance with the requirements of Part 6 of the regulations. These procedures did not include testing of the calculation of the preserved and restricted non-preserved amounts.

- b) complied with the relevant requirements of the following provisions (to the extent applicable) of the Corporations Act 2001 and Regulations:

sections 1012F, 1013D, 1013K, 1016A(2), 1016A(3), 1017B(5), 1017D(3), 1017D(3A), 1017E;

and regulation 7.9.32(3).

- c) adhered to the Guidelines for preparing risk management statements (“Guidelines”) issued by APRA in Circular IL.D.7 on Derivatives (to the extent applicable)

for the year ended 30 June 2002.

My procedures included examination, on a test basis, of evidence supporting compliance with those requirements of the Superannuation Industry (Supervision) Act 1993 and Regulations and the Corporations Act 2001 and Regulations.

My procedures with respect to the Guidelines consisted of confirming whether any Risk Management Statement was to be prepared by the superannuation entity's trustee under the Guidelines contained in the APRA Circular IL.D.7 at any time during the year of income.

These procedures indicated that only a Part A Risk Management Statement should be prepared by the CSS Board. This has been prepared and is broadly consistent with the requirements of the Guidelines.

These tests have not been performed continuously throughout the period, were not designed to detect all instances of non-compliance, and have not covered any other provisions of the Superannuation Industry (Supervision) Act 1993 and Regulations or Guidelines or the Corporations Act 2001 and Regulations apart from those specified. The CSS Board is responsible for complying with the requirements of the Superannuation Industry (Supervision) Act 1993 and Regulations and the Corporations Act 2001 and Regulations and appropriately applying the Guidelines.

The opinion on compliance expressed in this report has been formed on the above basis.

Audit Opinion

In my opinion, the CSS Board has complied, in all material respects, with the requirements of the Superannuation Industry (Supervision) Act 1993 and Regulations and the Corporations Act 2001 and Regulations and applied the Guidelines specified above for the year ended 30 June 2002.

Australian National Audit Office



David C. McKean
Executive Director

Delegate of the Auditor General
Canberra

10 September 2002

Commonwealth Superannuation Scheme

Statement by the Trustee of the CSS Fund

The Trustee hereby states that in its opinion:

- (a) the attached financial statements of the Commonwealth Superannuation Scheme show a true and fair view of the matters required by Australian Accounting Standard, AAS 25, Financial Reporting by Superannuation Plans and Schedule 1 of the Financial Management Accountability (Financial Statements 2001–02) Orders to the extent that the latter is not inconsistent with the former;
- (b) the attached financial statements of the Commonwealth Superannuation Scheme show a true and fair view of the net assets of the Scheme as at 30 June 2002 and the changes in net assets of the Scheme for the year ended 30 June 2002;
- (c) at the date of this statement there are reasonable grounds to believe that the Scheme will be able to pay its debts as and when they fall due;
- (d) the financial statements are in a form agreed by the Minister for Finance and Administration and the CSS Board in accordance with sub-section 161(1A) of the *Superannuation Act 1976* and have been prepared in accordance with Australian Accounting Standards and other mandatory professional reporting requirements; and
- (e) the operations of the Fund were conducted in accordance with the *Superannuation Act 1976* and the requirements of the *Superannuation Industry (Supervision) Act 1993* and Regulations.

Signed at Sydney this 10th day of September 2002 in accordance with a resolution of members of the CSS Board as Trustee of the CSS Fund.



P. Reynolds
Chairperson



W. Hall
Member

CSS Board

COMMONWEALTH SUPERANNUATION SCHEME

Statement of Changes in Net Assets
For the Year Ended 30 June 2002

	Note	2002 \$'000	2001 \$'000
Net assets available to pay benefits at the beginning of the financial year		5 963 823	6 122 794
Add:			
Revenue from ordinary activities			
Net investment revenue			
Interest		45 609	56 067
Dividends		151 152	135 648
Other investment income		801	1 538
Changes in net market value of investments	3	(545 468)	(91 621)
Less: Direct investment expenses	4c	<u>(11 609)</u>	<u>(11 924)</u>
		<u>(359 515)</u>	<u>89 708</u>
Contribution revenue			
Employee contributions	4a	152 703	162 214
Employer contributions	4a	48 792	52 725
Appropriation from CRF	4b	<u>2 223 126</u>	<u>2 078 300</u>
		<u>2 424 621</u>	<u>2 293 239</u>
Total revenue from ordinary activities		<u>2 065 106</u>	<u>2 382 947</u>
Less:			
Expenses from ordinary activities			
General administration expenses	1k 4c	(1 795)	(994)
Benefits paid			
Benefits paid	4b	(2 729 751)	(2 571 459)
Transfers to PSS Fund	6	<u>(547)</u>	<u>26 024</u>
Total expenses from ordinary activities		<u>(2 732 093)</u>	<u>(2 546 429)</u>
Total revenue less expenses and benefits paid before income tax		(666 987)	(163 482)
Income tax (expense)/benefit	5	<u>39 904</u>	<u>4 511</u>
Total revenue less expenses and benefits paid after income tax		<u>(627 083)</u>	<u>(158 971)</u>
Net assets available to pay benefits at the end of the financial year		<u>5 336 740</u>	<u>5 963 823</u>

The attached notes form part of these financial statements.

COMMONWEALTH SUPERANNUATION SCHEME

Statement of Net Assets
As at 30 June 2002

	Note	2002 \$'000	2001 \$'000
Investments	1c		
Cash and short term deposits		41 097	120 992
Australian money market		135 503	128 791
Australian fixed interest		398 703	435 606
International fixed interest		141 074	167 858
Australian equity investments		1 414 020	1 703 935
International equity investments		1 938 221	2 315 489
Unlisted property trusts		885 535	838 528
Pooled superannuation trusts		296 319	372 697
Currency contracts		82 287	(41 119)
Other investments		16 936	16 726
Total investments		5 349 695	6 059 503
Other assets			
Cash at bank		3 886	8 872
CRF Special Account		(74)	6 087
Interest receivable		10 623	13 175
Dividends receivable		11 086	10 269
Trade settlements receivable		20 570	15 269
GST recoverable		306	148
Sundry debtors		55	16
Benefits payable to be funded by Appropriation	4b	810	11 571
Deferred tax assets		7 210	6 745
Total other assets		54 472	72 152
Total assets		5 404 167	6 131 655
Less: Liabilities			
Benefits payable	4b	19 966	54 556
Trade settlements payable		17 059	16 128
Sundry creditors	7	4 604	6 234
Amounts due to other superannuation schemes	6	530	700
Current tax liabilities		2 675	19 276
Deferred tax liabilities		22 593	70 938
Total liabilities		67 427	167 832
Net assets available to pay benefits	11	5 336 740	5 963 823

The attached notes form part of these financial statements.

COMMONWEALTH SUPERANNUATION SCHEME

NOTES TO AND FORMING PART OF THE FINANCIAL STATEMENTS

For the year ended 30 June 2002

1. SUMMARY OF PRINCIPAL ACCOUNTING POLICIES**(a) Basis of Preparation**

These financial statements have been prepared in accordance with the Defined Benefit Plan provisions of AAS 25 'Financial Reporting by Superannuation Plans', other applicable Australian Accounting Standards (AAS) and Urgent Issues Group Consensus Views.

A Defined Benefit Plan refers to a superannuation plan where the amounts to be paid to members on retirement are determined at least in part by a formula based on their years of membership and salary levels.

The Scheme has adopted the provisions of paragraph 22(a) of AAS 25 whereby the financial statements include a Statement of Net Assets, a Statement of Changes in Net Assets and Notes thereto.

The form of these financial statements has been agreed by the Minister for Finance and Administration and the CSS Board in accordance with sub-section 161(1A) of the *Superannuation Act 1976*.

Unless otherwise stated, these accounting policies were also adopted in the corresponding preceding reporting period.

(b) Revenue

Investment revenue and contributions are brought to account on an accruals basis. Dividends on quoted shares are deemed to accrue on the date the dividend is declared. Changes in the net market value of assets are recognised in the statement of changes in net assets in the period in which they occur. Transfers from other funds are brought to account when received.

(c) Valuation of Investments

Assets of the CSS are recorded at net market value as at the reporting date and changes in the net market value of assets are recognised in the Statement of Changes in Net Assets in the periods in which they occur. Net market values of investments include an amount for selling costs which would be expected to be incurred if the investments were sold.

The bases of market valuations are summarised below:

- (i) Short-term Money Market - these securities are valued at the market closing price on 30 June and include accrued interest.
- (ii) Fixed Interest - these securities are valued at their market value on 30 June. Interest is accrued over the period and is recorded as part of other assets.
- (iii) Futures Contracts - open futures contracts are revalued to closing price quoted at close of business on 30 June.
- (iv) Equities - the security prices used for equities are the last sale price of a security on the relevant exchange at close of business on 30 June.
- (v) Exchange Traded Options - options are valued as the premium payable or receivable to close out the contracts at the last buy price quoted at close of business on 30 June.

COMMONWEALTH SUPERANNUATION SCHEME

NOTES TO AND FORMING PART OF THE FINANCIAL STATEMENTS

For the year ended 30 June 2002

1. SUMMARY OF PRINCIPAL ACCOUNTING POLICIES (Cont.)

(c) Valuation of Investments (Cont.)

- (vi) Unlisted investments- investments are valued annually in accordance with valuation guidelines agreed by the Board. Guidelines for valuations are set out in the Board's Valuation of Investments policy and the relevant Trust Deed for the investment. Valuations may be completed by an independent qualified valuer, the Investment Manager or the Board. In determining the valuation reference is made to guidelines set by relevant associations (such as Australian Venture Capital Association Ltd), or Australian Accounting Standards as the basis for valuation.
- (vii) Units in Unlisted Property Trusts and Pooled Superannuation Trusts - units are valued at their most recent redemption price as determined by the manager of the relevant trust, consistent with the methods listed above that are relevant to the underlying assets held by the unit trusts.

(d) Foreign Currency Translation

Foreign currency positions are converted to Australian currency using the currency exchange rate in effect at the point of recognition of each transaction. Foreign currency amounts receivable and amounts payable are converted to Australian currency using the exchange rate as at balance date. Resulting exchange differences are brought to account in determining the change in market value of investments for the year and hence the net assets available to pay benefits at the end of the financial year.

(e) Use of Derivatives

The Fund's investment managers may use a number of derivative securities such as futures, options and forward exchange contracts to facilitate increases or decreases in the Fund's exposure to different investment markets. Derivative securities are not to be used for gearing the portfolio or for placing the Fund in a position where it is short an asset class.

Investment mandates granted to investment managers, which permit the use of derivatives, are to reflect the foregoing policy for the Fund as a whole. Individual mandates may allow some gearing and the capacity to short markets but this must not involve the total fund being geared or being short an asset class. Where the Board's investment managers use derivative securities, the Board's internal investment team and /or investment advisors will monitor that such use is consistent with the Board's policy, and advise the Board of any breaches.

(f) Income Tax

Tax effect accounting procedures are followed whereby the income tax expense in the Statement of Changes in Net Assets is matched with total revenue less expenses and benefits paid before income tax, after allowing for permanent differences. The future tax benefit relating to tax losses is not carried forward as an asset unless the benefit is virtually certain of realisation. Income tax on net cumulative timing differences is set aside to deferred income tax or future income tax benefit accounts at rates which are expected to apply when those timing differences occur.

(g) Contributions Receivable

Employee and employer (productivity) contributions are due and payable on each fortnightly contribution day. The contributions do not accrue on a daily basis. Therefore, employee and employer (productivity) contributions in respect of the fortnightly contribution days that fell within the reporting period have been included in the financial statements.

COMMONWEALTH SUPERANNUATION SCHEME

NOTES TO AND FORMING PART OF THE FINANCIAL STATEMENTS

For the year ended 30 June 2002

1. SUMMARY OF PRINCIPAL ACCOUNTING POLICIES (Cont.)**(h) Benefits Payable**

Benefits payable represents benefits in respect of members who ceased employment with the employer sponsor prior to year end who are entitled to receive a benefit but had not been paid by that date.

(i) Liability for Accrued Benefits

The liability for accrued benefits is not included in the statement of net assets, but the liability at the latest measurement date is reported at note 13. Where accrued benefits are measured during the reporting period, the benefits which have accrued since the latest measurement date are also reported by way of note.

The liability for accrued benefits is actuarially measured on at least a triennial basis, and represents the value of the fund's present obligation to pay benefits to members and other beneficiaries at the date of measurement. The liability is determined as the present value of expected future payments which arise from membership of the Fund up to the date of measurement.

The present value reported in the notes is determined by reference to expected future salary levels and by application of a current, market-determined, risk-adjusted discount rate and appropriate actuarial assumptions.

(j) Superannuation Contributions Surcharge

The surcharge is accounted for as and when the amount becomes payable to the Australian Taxation Office.

(k) Expenses of the CSS Board

Costs of the CSS Board which are related to its responsibilities for the management of the CSS Fund and the investment of its moneys are a charge against the Fund. Fees paid to the Chairman of the CSS Board are also a charge against the Fund. Fees for other CSS Board members are charged 50% to the Fund and 50% against the Commissioner for Superannuation.

All other costs incurred by the Board are met from revenues generated through user charging arrangements with employer agencies and the Department of Finance and Administration. These revenues and the associated expenditure of the CSS Board have been brought to account in the financial statements of the Commissioner of Superannuation.

(l) Goods and services Tax (GST)

Where applicable GST incurred by the fund that is not recoverable from the Australian Taxation Office, has been recognised as part of the expense to which it applies. Receivables and payables are stated with any applicable GST included in their carrying amounts.

The amount of any GST recoverable from, or payable to, the Australian Taxation Office is included as an asset or liability in the Statement of Net Assets.

(m) Sundry Debtors and Creditors

Sundry debtors are recognised at the amounts receivable, which approximate net fair value. Sundry creditors represent liabilities for goods and services provided to the scheme prior to the end of the financial year and which are unpaid. The amounts are unsecured. Sundry debtors and creditors are subject to normal trade credit terms.

COMMONWEALTH SUPERANNUATION SCHEME

NOTES TO AND FORMING PART OF THE FINANCIAL STATEMENTS

For the year ended 30 June 2002

2. NATURE OF SCHEME AND PRINCIPAL ACTIVITIES

(a) The Commonwealth Superannuation Scheme is a defined benefit scheme which provides benefits to its members under the *Superannuation Act 1976* (as subsequently amended).

(b) Member and Employee Numbers

	2002	2001
Number of members		
- Contributors	40 015	43 551
- Deferred beneficiaries/preservers	13 956	14 079
- Pensioners	111 256	109 880
	<u>165 227</u>	<u>167 510</u>
 Number of employees	 <u>13</u>	 <u>5</u>

3. CHANGES IN NET MARKET VALUES

	2002	2001
	\$'000	\$'000
Changes in net market values of investments:		

(a) Investments held at 30 June

Australian money market	798	361
Australian fixed interest	(3 000)	(1 063)
International fixed interest	(20 238)	905
Australian equity investments	(83 862)	117 318
International equity investments	(461 189)	(65 683)
Unlisted property trusts	4 962	49 338
Pooled superannuation trusts	(2 238)	(24 959)
Currency contracts	123 820	(42 952)
Other investments	(2 929)	(2 279)
	<u>(443 876)</u>	<u>30 986</u>

(b) Investments realised during the year:

Australian money market	3 726	4 455
Australian fixed interest	348	1 651
International fixed interest	(16 982)	(6 965)
Australian equity investments	(29 362)	(667)
International equity investments	(90 658)	12 504
Unlisted property trusts	0	1 456
Pooled superannuation trusts	11 530	(601)
Currency contracts	32 330	(132 074)
Other investments	(12 524)	(2 366)
	<u>(101 592)</u>	<u>(122 607)</u>

(c) Total changes in net market values of investments

	<u>(545 468)</u>	<u>(91 621)</u>
--	-------------------------	-----------------

The net gain on foreign currency contracts for the year was \$156.1m (2001: net loss \$175.0m). This amount is the net of the realised and unrealised gains and losses on foreign currency contracts identified above. This does not include gains and losses on foreign currency transactions that may have occurred in the Pooled Trust investments.

COMMONWEALTH SUPERANNUATION SCHEME

NOTES TO AND FORMING PART OF THE FINANCIAL STATEMENTS

For the year ended 30 June 2002

4. FUNDING ARRANGEMENTS**(a) Contributions**

Members contribute to the Scheme at optional rates ranging from a minimum of 5 per cent to a maximum of 10 per cent of salary paid to the member. Employers who do not operate their own productivity schemes contribute employer (productivity) contributions to the Scheme on a sliding scale averaging 3 per cent of salaries paid to the members.

(b) Benefits

Where a benefit that becomes payable under the Scheme can be fully met from moneys held in the Fund, the benefit is paid to the beneficiary from the Fund. Where a benefit that becomes payable under the Scheme cannot be fully met from moneys held in the Fund, all moneys held in the Fund in respect of the member are paid into the Consolidated Revenue Fund (CRF) which assumes responsibility for the payment of the benefit.

Benefits payable by the Consolidated Revenue Fund as at 30 June 2002 totalled \$0.8m (2001: \$11.6m). The Commonwealth is the corresponding debtor for this amount in accordance with the funding arrangements described above.

The following provides a breakdown of benefits paid by both the Fund and the Consolidated Revenue Fund:

	2002	2001
	\$'000	\$'000
Gross Appropriation from CRF	2 728 597	2 569 236
less: Transfers from Fund to CRF	(505 471)	(490 936)
Net Appropriation	<u>2 223 126</u>	<u>2 078 300</u>
CSS Fund		
Lump-sum Benefits	<u>1 154</u>	<u>2 223</u>
Consolidated Revenue Fund		
Lump-sum Benefits	517 805	533 265
Transfer Values	670	165
Pensions	2 209 146	2 034 190
Other	976	1 616
	<u>2 728 597</u>	<u>2 569 236</u>
Total benefits paid	<u>2 729 751</u>	<u>2 571 459</u>

(c) Costs of Administration

The *Superannuation Act 1976* requires the Commissioner for Superannuation (through ComSuper) to provide administrative support to the CSS Board to enable the Board to perform its functions under the Act. Under the provisions of the Act, the CSS Fund meets the expenses of the Board in respect to the Board's responsibilities for the management and investment of the Fund. All other scheme expenses of the Board and the Commissioner for Superannuation/ComSuper are met from administrative fees paid to ComSuper by employing agencies. Transactions in respect of the receipt of these fees and the costs of administration have been brought to account in the financial statements of the Commissioner for Superannuation.

COMMONWEALTH SUPERANNUATION SCHEME

NOTES TO AND FORMING PART OF THE FINANCIAL STATEMENTS

For the year ended 30 June 2002

4. FUNDING ARRANGEMENTS (Cont.)

The breakdown of administrative expenses of the CSS Fund met by the Fund and by the Commissioner for Superannuation in respect of 2001–02 are as follows:

	2002	2001
	\$'000	\$'000
CSS Fund	1 795	994
Board Administration	1 000	760
ComSuper Administration	10 711	11 917
Total	13 506	13 671

For administrative simplicity, the PSS and CSS Boards were treated as a single cost centre for scheme administration purposes in 2000–01 and 2001–02. As from 1 July, 2002 the PSS and CSS Boards are separate entities under the *Financial Management and Accountability Act 1997* for scheme administrative purposes. The above figures have been calculated using the methodology now in place for sharing of administrative fees between each Board.

Direct investment expenses include charges levied by the Investment Advisors, Investment Managers and Custodian to invest and manage the assets of the CSS Fund. The Direct investment expenses for 2001–02 are as follows:

	2002	2001
	\$'000	\$'000
Investment Advisors	1 787	2 636
Investment Managers	8 093	7 115
Custodian	1 404	1 521
Other	320	652
	11 604	11 924
GST Expense	5	0
Total	11 609	11 924

5. INCOME TAX

The taxation liability at 30 June 2002 has been calculated on the basis that the CSS Fund is a complying superannuation fund within the meaning of the *Superannuation Industry (Supervision) Act 1993* and that tax will be payable at a concessional rate of 15% on net investment earnings, employer contributions and capital gains with deductions allowable for administration expenses incurred by the Fund.

The aggregate amount of income tax attributable to the period is not equal to 15 per cent of the Net Investment Revenue and Net Contributions Revenue Before Tax as shown in the Statement of Changes in Net Assets. The difference is reconciled as follows:

COMMONWEALTH SUPERANNUATION SCHEME

NOTES TO AND FORMING PART OF THE FINANCIAL STATEMENTS

For the year ended 30 June 2002

5. INCOME TAX (Cont)

	2002	2001
	\$'000	\$'000
Total revenue less expenses and benefits paid before income tax	<u>(666 987)</u>	<u>(163 482)</u>
Prima facie income tax expense calculated at 15%	(100 048)	(24 522)
Add/(Less) Permanent Differences		
Employee contributions	(22 905)	(24 332)
Benefits paid	75 994	73 974
Income from Pooled Superannuation Trusts	(1 394)	1 072
Imputation credits from franked dividends received	2 447	4 263
Other	<u>24 015</u>	<u>(147)</u>
	(21 891)	30 308
Less: Imputation and foreign tax credits	(17 830)	(29 979)
Less: Under (over) provision in prior years	<u>(183)</u>	<u>(4 840)</u>
Income Tax (Benefit) Expense	<u><u>(39 904)</u></u>	<u><u>(4 511)</u></u>
 Income tax expense comprises:		
Income tax payable current year	1 681	18 144
Amount paid during 2001–02	7 682	8 697
Movement in deferred income tax provisions	(49 084)	(26 512)
Under/over provision in prior year	<u>(183)</u>	<u>(4 840)</u>
	<u><u>(39 904)</u></u>	<u><u>(4 511)</u></u>

6. TRANSFERS FROM THE CSS TO THE PSS

Certain former contributors to the CSS who again become members of the Scheme are entitled to elect to transfer to the PSS. During the period 1 July 2001 to 30 June 2002 a small number of returning CSS members exercised their election to transfer to the PSS.

As at 30 June 2002 the Ministerial determination to effect these transfers had not been completed and \$530 000 has been brought to account as a current liability of the CSS Fund.

An amount of \$717 056 was paid, by way of asset transfer, from the CSS Fund to the PSS Fund for members who elected to move to the PSS Fund during 2000-01.

COMMONWEALTH SUPERANNUATION SCHEME

NOTES TO AND FORMING PART OF THE FINANCIAL STATEMENTS

For the year ended 30 June 2002

7. SUNDRY CREDITORS

	2002	2001
	\$'000	\$'000
Investment expenses payable	2 940	3 256
Contributions in advance	0	1 530
Accrued expenses	265	431
Other	1 399	1 017
	<u>4 604</u>	<u>6 234</u>

8. AUDITOR'S REMUNERATION

	2002	2001
	\$'000	\$'000
Amounts received or due and receivable by the Australian National Audit Office as auditors of CSS:	<u>43</u>	<u>43</u>

PricewaterhouseCoopers have been contracted by the Australian National Audit Office to provide audit services. Fees for these services have been included above. In addition, PricewaterhouseCoopers have earned the following fees for engagements where they have been separately contracted by CSS:

Taxation Services	<u>162</u>	<u>76</u>
-------------------	-------------------	-----------

9. SUPERANNUATION CONTRIBUTIONS SURCHARGE

The Superannuation Contributions Surcharge applies to the surchargeable superannuation contributions of members, whose adjusted taxable income exceeds the surcharge threshold. Surcharge liabilities are calculated by the Australian Taxation Office (ATO) and recorded against CSS member accounts. The surcharge liability may be paid by the member in full or in part during the period of scheme membership. Any surcharge liability remaining at the end of a financial year incurs interest. The scheme rules provide for any outstanding surcharge liability to be recovered from the benefit payable to the member.

COMMONWEALTH SUPERANNUATION SCHEME

NOTES TO AND FORMING PART OF THE FINANCIAL STATEMENTS

For the year ended 30 June 2002

9. SUPERANNUATION CONTRIBUTIONS SURCHARGE (Cont.)

A summary of transactions recorded during 2001/2002 follows:

	2002	2001
	\$'000	\$'000
Total Surcharge Liability Outstanding at start of year	20 037	17 015
Surcharge liability recorded against member accounts in respect of surcharge assessments received during the year	9 831	4 684
	29 868	21 699
Less: Amount paid by members and CRF	(4 328)	(3 152)
	25 540	18 547
Plus: Interest on outstanding surcharge liability at 30 June 2002	1 936	1 490
Total Surcharge liability outstanding at end of year	27 476	20 037

The surcharge liability in respect of surchargeable superannuation contributions for the period 1 July 2001 to 30 June 2002 has not been disclosed because the assessments have not, as yet, been issued by the ATO and there is no reliable basis on which an assessment of the likely surcharge liability can be made.

No liability is recognised in the financial statements for the estimated value of the surcharge liability because the liability will be either met by the members during their period of membership or will be recovered from member benefits which are funded to a significant extent from Consolidated Revenue Fund.

10. FINANCIAL INSTRUMENT DISCLOSURES

The investments of the Fund (other than cash held for meeting daily administrative and benefit exposures), are managed on behalf of the Board by specialist sector fund managers who are required to invest the assets allocated for management in accordance with the terms of a written investment mandate. The Board has determined that the appointment of these managers is appropriate for the Fund and is in accordance with the Board's investment strategy.

COMMONWEALTH SUPERANNUATION SCHEME

NOTES TO AND FORMING PART OF THE FINANCIAL STATEMENTS

For the year ended 30 June 2002

10. FINANCIAL INSTRUMENT DISCLOSURES (Cont.)

J P Morgan acts as master custodian on behalf of the Trustee and as such provides services including physical custody and safekeeping of assets, settlement of trades, collection of dividends and accounting of investment transactions.

The Board employs the following investment advisors:

- Towers Perrin as advisor for strategic asset allocation/investment policy. Towers Perrin also provide risk monitoring, investment research and performance reporting at a total fund level;
- JANA Investment Advisors to provide investment manager selection and monitoring with respect to Australian and International equities, fixed interest and Australian property; and
- Wilshire Australia to advise the Board on new Australian private equity investments and monitor the Board's existing Australian private equity commitments.

(a) Use of Derivative Financial Instruments

The Fund's investment managers may use a number of derivative securities such as futures, options and forward exchange contracts to facilitate increases or decreases in the Fund's exposure to different investment markets. Derivative securities are not to be used for gearing the portfolio or for placing the Fund in a position where it is short an asset class.

Investment mandates granted to investment managers, which permit the use of derivatives, are to reflect the foregoing policy for the Fund as a whole. Individual mandates may allow some gearing and the capacity to short markets but this must not involve the total fund being geared or being short an asset class. Where the Board's investment managers use derivative securities, the Board's internal investment team and /or investment advisors will monitor that such use is consistent with the Board's policy, and advise the Board of any breaches.

At 30 June, the notional principal amounts and the net fair value of derivatives held by the Fund where as follows:

	<i>Notional Principal Amounts</i>		<i>Net Market Value</i>	
	2002	2001	2002	2001
	\$'000	\$'000	\$'000	\$'000
Australian Share Price Index Futures	13 764	23 940	(99)	167
Australian Exchange Traded Options	536	16 454	15 919	3 413
International Share Price Index Futures	2 392	61 341	16	(992)
Currency Contracts	2 115 780	1 324 013	82 287	(41 119)
Total	2 132 472	1 425 748	98 123	(38 531)

(b) Credit Risk

The net market value of financial assets, with the exception of derivative positions, included in the statement of net assets represent the Fund's exposure to credit risk in relation to those assets. For derivative positions, the credit risk is equal to the net market value of positive (asset) derivative positions which amount to \$ 2 814.6m (2001: \$1 490.8m). The Fund does not have significant exposures to any individual counterparty or industry.

COMMONWEALTH SUPERANNUATION SCHEME

NOTES TO AND FORMING PART OF THE FINANCIAL STATEMENTS

For the year ended 30 June 2002

10. FINANCIAL INSTRUMENT DISCLOSURES (Cont.)**(c) Interest Rate Risk**

The Fund invests in financial investments for the primary purpose of obtaining a return on investments on behalf of its members. As such, the Fund's investments are subject to interest rate risks and the return on the investments will fluctuate in accordance with movements in market interest rates. The Fund's exposure to interest rate movements on investments at 30 June 2002 was as follows:

	Floating Interest Rate	Fixed Interest Rate			Non Interest Bearing	Total
		1 Year or Less	1-5 Years	Over 5 Years		
	\$'000	\$'000	\$'000	\$'000	\$'000	\$'000
30 June 2002						
Assets						
Cash and short term deposits	41 097					41 097
Australian money market	135 503					135 503
Australian fixed interest		39 249	195 480	163 974		398 703
International fixed interest		79	25 055	115 940		141 074
Australian equity investments					1 414 020	1 414 020
International equity investments					1 938 221	1 938 221
Unlisted property trusts					885 535	885 535
Pooled superannuation trusts					296 319	296 319
Currency contracts					82 287	82 287
Other investments					16 936	16 936
Other assets	3 886				43 376	47 262
Deferred tax assets					7 210	7 210
Liabilities						
Benefits payable					(19 966)	(19 966)
Trade settlements payable					(17 059)	(17 059)
Sundry creditors					(4 604)	(4 604)
Amounts due to other schemes					(530)	(530)
Current tax liabilities					(2 675)	(2 675)
Deferred tax liabilities					(22 593)	(22 593)
Total	180 486	39 328	220 535	279 914	4 616 477	5 336 740
Weighted average interest rate	4.67%	5.19%	6.42%	7.76%		

COMMONWEALTH SUPERANNUATION SCHEME

NOTES TO AND FORMING PART OF THE FINANCIAL STATEMENTS

For the year ended 30 June 2002

10. FINANCIAL INSTRUMENT DISCLOSURES (Cont.)

(c) Interest Rate Risk

30 June 2001	Floating Interest Rate \$'000	Fixed Interest Rate			Non Interest Bearing \$'000	Total \$'000
		1 Year or Less \$'000	1-5 Years \$'000	Over 5 Years \$'000		
Assets						
Cash and short term deposits	110 106					110 106
Australian money market	128 791					128 791
Australian fixed interest		44 820	222 981	167 805		435 606
International fixed interest		736	20 631	146 491		167 858
Australian equity investments					1 714 821	1 714 821
International equity investments					2 315 489	2 315 489
Unlisted property trusts					838 528	838 528
Pooled superannuation trusts					372 697	372 697
Currency contracts					(41 119)	(41 119)
Other investments	5 720				11 006	16 726
Other assets	14 959				50 448	65 407
Deferred tax assets					6 745	6 745
Liabilities						
Benefits payable					(54 556)	(54 556)
Trade settlements payable					(16 128)	(16 128)
Sundry creditors					(6 234)	(6 234)
Amounts due to other schemes	(700)					(700)
Current tax liabilities					(19 276)	(19 276)
Deferred tax liabilities					(70 938)	(70 938)
Total	258 876	45 556	243 612	314 296	5 101 483	5 963 823
Weighted average interest rate	4.31%	5.56%	6.42%	8.96%		

(d) Currency Risk

The Fund's exposure at 30 June to foreign exchange rate movements on its international investments was as follows:

30 June 2002	US\$ A\$'000	JPY A\$'000	GPB A\$'000	EURO A\$'000	Other A\$'000	Total A\$'000
Gross investment amounts						
denominated in foreign currency	1 271 051	158 238	182 535	267 888	154 810	2 034 522
Amount effectively hedged	(1 191 963)	(191 968)	(171 563)	(306 415)	(171 583)	(2 033 492)
Net Exposure	79 088	(33 730)	10 972	(38 527)	(16 773)	1 030

COMMONWEALTH SUPERANNUATION SCHEME

NOTES TO AND FORMING PART OF THE FINANCIAL STATEMENTS

For the year ended 30 June 2002

10. FINANCIAL INSTRUMENT DISCLOSURES (Cont.)**(d) Currency Risk**

	US\$ A\$'000	JPY A\$'000	GBP A\$'000	EURO A\$'000	Other A\$'000	Total A\$'000
30 June 2001						
Gross investment amounts denominated in foreign currency	1 489 477	258 986	228 998	365 232	205 304	2 547 997
Amount effectively hedged	(813 859)	(121 313)	(101 766)	(211 920)	(116 274)	(1 365 132)
Net Exposure	675 618	137 673	127 232	153 312	89 030	1 182 865

(e) Net Fair Values of Financial Assets and Liabilities

The Fund's financial assets, liabilities and derivative instruments are included in the Statement of Net Assets at amounts that approximate net fair value.

11. RESERVE

The annual crediting rate is determined after transfers of income into and out of the reserve. The principal purpose of the reserve is to assist in managing short term mismatches between scheme earning rates and crediting rates which arise from the capital guarantee applying to members' accumulated contributions and the smoothing of investment returns.

The reserve is calculated as the difference between the net assets of the scheme and the value of the funded entitlements to be advised to members in their annual information statements. The value of the reserve is affected by changes in the funded entitlements, the exit rates applying at various times during the year and the difference between the earning and crediting rates of the scheme.

Due to the volatility of world financial markets over the past 12 months, the scheme's net earnings rate after tax for the year ended 30 June 2002 was -5.6%. Taking the negative earnings rate into consideration as well as their legislative obligations, the Board declared a crediting rate of 0% for the year ended 30 June 2002. The difference of 5.6% between the scheme's net earnings rate and the crediting rate to members accounts, has reduced the balance of the reserve as reported 30 June 2001 as follows:

	2002	2001
	\$'000	\$'000
Balance at Beginning of financial year	12 441	172 146
Add: Earnings on opening balance	(692)	3 577
Less: Allocation to member's accounts	(312 802)	(163 282)
Balance at end of financial year	(301 053)	12 441

The closing balance is a negative reserve (i.e. deficiency) and is estimated to represent 5.6% of the adjusted net assets of the scheme as at the 30 June 2002. This deficiency does not represent an "unsatisfactory financial position" under SIS Regulation 9.04. Regulation 9.02 specifically exempts the CSS Fund from the provisions of Regulation 9.04.

The Board has determined that the crediting/exit rate policy for the CSS Fund be suspended and the exit rate be set at zero until the reserve is within the range of -1% to + 1% of the value of the Fund.

COMMONWEALTH SUPERANNUATION SCHEME

NOTES TO AND FORMING PART OF THE FINANCIAL STATEMENTS

For the year ended 30 June 2002

12. VESTED BENEFITS

Vested benefits are benefits which are not conditional upon continued membership of the Scheme (or any other factor other than resignation from the Scheme) and include benefits which members were entitled to receive had they terminated their plan membership as at the reporting date.

Mercers Human Resource Consulting have advised that the amount of vested benefits at 30 June 2002 is \$54.43 billion (2001: \$55.3 billion). The value of vested benefits represents the liability that would have fallen on the Scheme if all members had ceased service on 30 June 2002 and elected the option which is most costly to the Scheme. The value quoted does not in any way represent the Scheme's liability under circumstances which have any reasonable possibility of arising.

The vested benefits amount is made up of:

	2002 \$million	2001 \$million
Funded Component	5 657	5 995
Unfunded Component	48 773	49 305
	54 430	55 300

The net assets of the fund compared to the vested benefits are:

	2002 \$million	2001 \$million
Funded Component	5 657	5 995
Net Assets plus Funded Benefits Payable	5 356	6 007
Surplus/(Deficiency)	(301)	12

13. LIABILITY FOR ACCRUED BENEFITS

The amount of accrued benefits is the present value of expected future payments which arise from membership of the Scheme up to the measurement date. The accrued benefits are comprised of a funded component, which will be met from the Fund, (ie. accumulated member contributions and, where applicable, productivity contributions, plus interest) and an unfunded component to be financed by the Commonwealth from the Consolidated Revenue Fund at the time the superannuation benefits became payable.

COMMONWEALTH SUPERANNUATION SCHEME

NOTES TO AND FORMING PART OF THE FINANCIAL STATEMENTS

For the year ended 30 June 2002

13. LIABILITY FOR ACCRUED BENEFITS (Cont.)

The amount of accrued benefits in respect of the CSS is calculated on a triennial basis. The most recent valuation of the accrued benefits was undertaken by Towers Perrin as a part of a comprehensive review during 1999-00 (an extract of the Towers Perrin report is attached). The next valuation of accrued benefits is as at 30 June 2002 and is expected to be completed by December 2002.

	1999	1996
	\$billion	\$billion
Accrued Benefits as at 30 June 1999 were:		
Funded component	5.6	4.9
Unfunded component	40.2	37.4
	45.8	42.3

The net assets compared to the liability for accrued benefits are:

	1999	1996
	\$billion	\$billion
Funded Component	5.56	4.84
Net Assets	5.59	4.87
Surplus/(Deficiency) Reserve	0.03	0.03

14. SEGMENT REPORTING

The CSS Scheme operates in the superannuation fund investment industry in Australia, however as part of its investment activities, it also maintains significant overseas investments.

15. RELATED PARTIES**(a) Members of the CSS Board**

The CSS Board, had the following members during the financial year:

P. Reynolds (Chairman)
 W Hall
 J Palmer
 S O'Loughlin
 R Balderstone
 C Manolios
 L McBride
 P Smith (alternate for J Palmer)
 J Flitcroft (alternate for S O'Loughlin)
 D Irons (alternate for W Hall)
 S Wilson (alternate for R Balderstone, L McBride & C Manolios)

Ms S. O'Loughlin was appointed as a member of the Board with effect from 1 July 2001 replacing Mr J.A. Flitcroft whose term of appointment expired on 30 June 2001.

Mr J.A. Flitcroft was appointed as alternate for Ms S. O'Loughlin from 1 July 2001. Since year end, Ms L McBride's term of appointment expired 27 July 2002. A replacement trustee has not yet been appointed.

COMMONWEALTH SUPERANNUATION SCHEME

NOTES TO AND FORMING PART OF THE FINANCIAL STATEMENTS

For the year ended 30 June 2002

15. RELATED PARTIES (Cont.)

(b) Trustee Related Transactions

Some members of the CSS Board may, as a result of their current employment, be members of the CSS scheme and as such would be required to have made contributions to the scheme during the 2001–02 financial year on the same terms and conditions applicable to all scheme members.

Total fees paid by the scheme in respect of CSS Board members entitled to receive fees during the year amounted to \$147,000 (2001: \$128,000).

(c) Executive Remuneration

The number of executive officers whose remuneration is greater than \$100,000 is within the following bands.

	2002	2001
\$230,001 to \$240,000	1	0
\$200,001 to \$210,000	1	0
\$170,001 to \$180,001	0	1
\$140,001 to \$150,000	1	0

(d) Associated Entities

In 1996-97 the CSS and PSS Boards formed a common controlled company, CSS/PSS Pty Ltd for the purpose of taking over trusteeship of the CFM Pooled Superannuation Trust (PST) from Commonwealth Funds Management as of 1 February 1999. The Boards appoints directors, who are current nominated members of the CSS and PSS Boards, to manage the company.

16. CONTINGENT LIABILITIES

(a) Investments

At 30 June the Fund had outstanding investment capital commitments of \$405.4m (2001: \$317.9m). These commitments are expected to be settled as follows:

	2002	2001
	\$'000	\$'000
Within 12 months	110 958	98 550
Greater than 12 months but less than 5 years	235 450	209 900
Greater than 5 years	58 952	9 460
	<u>405 360</u>	<u>317 910</u>

(b) Benefit Entitlements

In the normal course of business, requests are made by members and former members for the review of decisions relating to benefit entitlements of the Scheme which could result in additional benefits becoming payable in the future. Each request is considered on its merits prior to any benefit becoming payable. In the opinion of the Trustee, these requests do not represent a material liability to the Scheme.

The Trustee is not aware of any other potential contingent liabilities.

ACTUARIAL STATEMENT FOR AAS 25 PURPOSES
REPORTING PERIOD ENDED 30 JUNE 1999

COMMONWEALTH SUPERANNUATION SCHEME

This statement has been prepared for the purposes of AAS 25 as at 30 June 1999 for the Commonwealth Superannuation Scheme (CSS) at the request of the Department of Finance and Administration.

ACCRUED AND VESTED BENEFITS

AAS 25 requires the disclosure of Accrued and Vested Benefits at the reporting date.

For the purpose of AAS 25 the following amounts have been determined:

Reporting Date	Accrued Benefits \$m	Vested Benefits \$m
30 June 1999	45,838	51,066

Accrued Benefits have been determined as the present value of expected future benefit payments which arise from membership of the CSS up to the reporting date.

Vested Benefits are benefits which the CSS would be required to pay if all members were to voluntarily leave employment on the reporting date and elected the benefit option which is most costly to the Scheme.

The method and assumptions used to determine Accrued and Vested Benefits are summarised in Attachment 1 to this Statement.

Accrued Benefits have been calculated in a manner consistent with Guidance Note 454 and Professional Standard 402 issued by The Institute of Actuaries of Australia.

SUMMARY OF ACTUARIAL REPORT

AAS 25 also requires the notes to the scheme accounts to include a summary of the most recent actuarial report of the CSS. Attachment 2 to this Statement provides a summary of my report dated 19 June 2000 on the long term cost of the Public Sector Superannuation Scheme (PSS) and the CSS carried out as at 30 June 1999. The summary has been prepared in accordance with Professional Standard 401 issued by The Institute of Actuaries of Australia and contains the information required under AAS 25.



Andrew J Goddard, FIAA, FIA
4 August 2000

ATTACHMENT 1 TO AAS 25 STATEMENT

COMMONWEALTH SUPERANNUATION SCHEME

METHOD OF DETERMINING ACCRUED AND VESTED BENEFITS

Accrued Benefits were determined as the present value of expected future benefit payments that arise from membership of the CSS up to the date of calculation. The expected future benefits were determined allowing for future salary growth to the date of exit. Benefits were apportioned between past and future membership by reducing the projected benefit by the ratio of membership to the calculation date to membership at the date of exit.

The past membership component of the member-financed lump sum benefits and of productivity superannuation benefits is taken to be the accumulated amount of contributions and interest at the calculation date. An amount of \$5,591 million has been included in the Accrued Benefit in respect of the member financed benefit and productivity superannuation benefits.

The Accrued Benefit also includes the accrued amounts in respect of members of the superannuation funds of Telstra, Australia Post and AirServices Australia who previously transferred from the CSS. An amount of \$3,100 million has been included in the Accrued Benefit in respect of these members.

The Accrued Benefit also includes an amount of \$26,519 million in respect of pensioners and preserved beneficiaries of the CSS.

Vested Benefits are determined as the value of benefits which the CSS would be required to pay if all members were to voluntarily leave employment on the reporting date and elected the benefit option which is most costly to the CSS.

ASSUMPTIONS USED TO DETERMINE ACCRUED BENEFITS

With the exception of the financial assumptions, the other assumptions used to determine Accrued Benefits are the same as those used for the most recent actuarial investigation into the long term cost of the PSS and the CSS as at 30 June 1999.

The financial assumptions adopted for AAS25 purposes are essentially (in real terms) the same as the assumptions adopted for the long term cost report. Therefore, the Accrued Benefit calculated for AAS25 purposes is the same as that calculated for the purposes of the long term report.

The financial assumptions used to determine the Accrued Benefits along with those used for the most recent actuarial investigation are shown in the table below:

Item	AAS25	Long Term Cost Report
CPI increases	2.5% per annum	3.5% per annum
Investment Returns	6.0% per annum	7.0% per annum
General Salary Increases	4.0% per annum	5.0% per annum

The discount rate for AAS25 purposes has been taken as the long term bond rate as at 30 June 1999 of 6.3% per annum, adjusted to take into account investment expenses and anticipated future reinvestment rates. Allowance has not been made for investment tax as the employer financed portion of the benefit is paid as an untaxed benefit and funding of such benefit is not subject to tax.

The expected average future term of liabilities is considerably in excess of 10 years.

A summary of the other assumptions used is contained in Appendix B of the long term cost report of the PSS and the CSS dated 19 June 2000.



Andrew J Goddard, FIAA, FIA
4 August 2000

ATTACHMENT 2 TO AAS 25 STATEMENT
COMMONWEALTH SUPERANNUATION SCHEME
SUMMARY OF THE LONG TERM COST REPORT

The latest actuarial investigation into the long term cost of the CSS and PSS was conducted at 30 June 1999 and the results presented in my report dated 19 June 2000. This report was presented to Parliament in June 2000.

This attachment provides a summary of that report, including my opinion as to the financial condition of the CSS.

MEMBERSHIP DATA

Data relating to the membership of the PSS and the CSS was provided by ComSuper, on behalf of the PSS and CSS Boards, the schemes' administrator, for the purposes of this investigation.

The table below summarises the total membership of the CSS as at 30 June 1999.

CSS MEMBERSHIP AS AT 30 JUNE 1999			
	Male	Females	Total
Number of Contributors	36,616	16,264	52,880
Salaries – Total	\$2,052 m	\$777 m	\$2,829 m
- Average	\$56,055	\$47,751	\$53,501
Number of Preserved Beneficiaries	9,172	3,349	12,521
Number of Age Pensioners	43,356	12,561	55,917
Number of Invalid Pensioners	20,099	5,399	25,498
Number of Reversionary Pensioners	1,034	25,928	26,962

ASSUMPTIONS

The key financial assumptions adopted for this review are shown in the table below. The assumptions adopted for the previous review (which was carried out as at 30 June 1996) are shown for comparison purposes.

Item	Assumption	Previous Review
CPI increases	3.5% per annum	4.0% per annum
Investment Returns	3.5% per annum (real)	3.5% per annum (real)
General Salary Increases	1.5% per annum (real)	1.5% per annum (real)
GDP Increases	2.5% per annum (real)	2.5% per annum (real)

The differences between the key financial assumptions at 1999 are the same as the corresponding differences in 1996. Therefore, the change in assumption relating to CPI increases will not lead to a material change in the results of the investigation.

VALUE OF ASSETS

The PSS and CSS are partly funded to the extent that real assets are held in respect of member contributions and productivity superannuation contributions. The realisable value of the CSS assets as 30 June 1999 was \$5,591 million.

ACCRUED BENEFITS

The value of Accrued Benefits for the CSS as at 30 June 1999 was \$45,838 million.

Accrued Benefits were determined as the present value of expected future benefit payments that arise from membership of the CSS up to the date of calculation. The expected future benefits were determined allowing for future salary growth to the date of exit. Benefits were apportioned between past and future membership by reducing the projected benefit by the ratio of membership to the calculation date to membership at the date of exit.

The past membership component of the member-financed lump sum benefits and of productivity superannuation benefits is taken to be the accumulated amount of contributions and interest at the calculation date. An amount of \$5,591 million has been included in the Accrued Benefit in respect of the member financed benefit and productivity superannuation benefits.

The Accrued Benefit also includes the accrued amounts in respect of members of the superannuation funds of Telstra, Australia Post and AirServices Australia who previously transferred from the CSS. An amount of \$3,100 million has been included in the Accrued Benefit in respect of these members.

The Accrued Benefit also includes an amount of \$26,519 million in respect of pensioners and preserved beneficiaries of the CSS.

VESTED BENEFITS

Vested Benefits of the CSS were not calculated as a part of the long term cost report as at 30 June 1999 but were separately calculated.

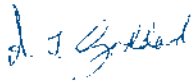
Vested Benefits are determined as the value of benefits which the CSS would be required to pay if all members were to voluntarily leave employment on the reporting date and elected the option which is most costly to the CSS.

The estimated value of the Vested Benefits of the CSS as at 30 June 1999 is \$51,066.

FINANCIAL CONDITION

The CSS is a partially funded scheme. Therefore, as would be expected in such a scheme, the value of Accrued Benefits and Vested Benefits is significantly more than the realisable value of scheme assets at the same date.

However, the CSS operates under an underlying guarantee from the Commonwealth Government. Further, my investigations show that the projected combined Commonwealth costs in respect of the PSS and the CSS reduce as a percentage of projected Gross Domestic Product over the next 45 years.



Andrew J Goddard, FIAA, FIA
4 August 2000



Appendixes

A:	The CSS in brief	110
B:	Changes to the legislation	112
C:	Departments and approved authorities	114
D:	Eligible superannuation schemes	117
E:	Freedom of Information	118
F:	Publications	121
G:	Contact officer	122
H:	Compliance	123
I:	Staffing Statistics	124
J:	Consultancies	125
K:	Commonwealth Disability Strategy	127
L:	Glossary	128

Appendix A: CSS in brief

Investment

ASSET ALLOCATION Sector	30 June 2001		30 June 2002	
	\$m	%	\$m	%
Australian shares	1 761.4	29.6	1 473.3	27.8
International shares (Developed)	2 230.4	37.5	1 926.4	36.4
International shares (Emerging)	278.2	4.7	236.4	4.5
Australian bond	458.5	7.7	414.9	7.8
High yield debt	200.5	3.4	153.8	2.9
Cash	126.5	2.1	148.5	2.8
Property	891.2	15.0	895.8	16.9
Hedge funds	-	-	50.1	0.9
Total	5 946.7	100.0	5 299.2	100.0

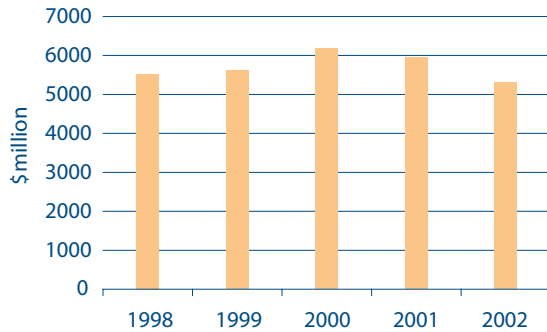
INVESTMENT PERFORMANCE Sector	2000–01		2001–02	
	Fund %	Benchmark %	Fund %	Benchmark %
Australian shares	12.7	9.8	(0.2)	(3.2)
International shares (Developed)	(6.9)	(10.2)	(15.8)	(19.3)
International shares (Emerging)	(10.8)	(11.2)	(6.1)	(7.5)
Australian bonds	6.3	6.2	5.1	5.3
High yield debt	(8.2)	1.2	(5.5)	(1.4)
Cash	5.2	5.1	3.8	3.9
Property	9.0	8.8	6.9	8.6
Hedge funds	-	-	2.4	-
RETURN ON INVESTMENT	1.7	(0.8)	(5.1)	(8.4)

	2000–01	2001–02
Annual crediting rate	5.0%	0.0%
Annual inflation rate	6.0%	2.8%

Fund size

Fund size at 30 June for past five years

FINANCIAL YEAR	Value \$m	Change %
1997–98	5 518.0	-0.7
1998–99	5 618.3	1.8
1999–00	6 188.0	10.1
2000–01	5 946.7	-3.9
2001–02	5 299.2	-10.9



Scheme membership

Contributors at 30 June	2001	2002	Increase / Decrease
Male	29 858	27 287	(2 571)
Female	13 693	12 728	(965)
Total	43 551	40 015	(3 536)
Total Member Contributions	\$162m	\$153m	(9m)
Contributor Exits	2000-01	2001-02	
Age (including Preserved age claims)	2 666	3 111	445
Retrenchment (Involuntary and Sale of Assets)	2 558	1 919	(639)
Invalidity (Including Preserved Invalidity)	156	147	(9)
Death	17	27	10
Resignation / Other	1 535	1 534	(1)
Total	6 932	6 738	(194)
Pensions in Force at 30 June	2001	2002	
Age Retirement	43 714	46 221	2 507
Involuntary Retirement	14 894	14 531	(363)
Invalidity Retirement	23 831	22 979	(852)
Spouse and Orphans	28 467	27 847	(620)
Total	110 906	111 578	672
Pensions Paid	\$2 034m	\$2 202m	\$167m
Average Yearly Pension	\$19 468	\$19 908	\$440
Preserved Benefit Members at 30 June	2001	2002	
Total	14 079	13 956	123

Appendix B: Changes to legislation

Changes to the CSS Act

A number of changes were made to the Act:

- facilitating the removal of compulsory age retirement in the APS and removing unnecessary barriers to the continued appointment of those over 65 to Commonwealth Statutory appointments;
- amending various offence provisions so that they will operate consistently with criminal code policy;
- providing for twice yearly indexation of pensions;
- providing for post retirement commutations in order to satisfy a surcharge liability;
- accommodating the move to a quarterly regime with respect to the *Superannuation Guarantee (Administration) Act 1992*.

Statutory rules

There were several amendments:

- correcting consequential amendments made by the *Public Employment (Consequential and Transitional) Amendment Act 1999*;
- providing for continued membership of the CSS by certain employees employed by :
Sydney Airports Corporation;
Bankstown Airport;
Essendon Airport;
Sydney Harbour Federation Trust;
Snowy Hydro Limited; and
Australian Training Authority;
- setting annual increments to productivity contribution rates to reflect changes in the general salary levels of members; and
- setting annual increases to maximum benefit levels for ordinary scheme members and scheme members employed by the Australian Federal Police.

Determinations made

Nine interest rate determinations were made during the year; one to set the crediting rate for the 2000-01 financial year, one to vary the definition of termination day and the remainder to vary the prevailing exit rate. One further determination was made in respect of the transfer of assets from the CSS Fund to the PSS Fund in respect of transferred members.

Appendix C: Departments and approved authorities

At 30 June 2002 the following departments and approved authorities were employers of people who were eligible to contribute to the CSS.

Departments

Agriculture, Fisheries and Forestry
Attorney-General's
Communications, Information Technology and the Arts
Defence
Education, Science and Training
Employment and Workplace Relations
Environment and Heritage
Family and Community Services
Finance and Administration
Foreign Affairs and Trade
Health and Ageing
House of Representatives
Immigration and Multicultural and Indigenous Affairs
Industry, Tourism and Resources
Joint House
Parliamentary Library
Parliamentary Reporting Staff
Prime Minister and Cabinet
Senate
Transport and Regional Services
Treasury
Veterans' Affairs

Approved authorities

Aboriginal and Torres Strait Islander Commercial Development Corporation
Aboriginal Areas Protection Authority
Aboriginal Hostels
ACTEW Corporation Ltd
Adelaide Symphony Orchestra Pty Ltd
Airservices Australia
Albury Wodonga Development Corporation
Anglo - Australian Telescope Board
Australia Council
Australian Broadcasting Corporation
Australian Capital Territory
Australian Dairy Corporation
Australian Film Commission
Australian Film, Television and Radio School
Australian Fisheries Management Authority
Australia Foundation for Culture and the Humanities Ltd
Australian Institute of Aboriginal and Torres Strait Islander Studies
Australian Institute of Criminology
Australian Institute of Family Studies
Australian Institute of Marine Science
Australian International Hotel School
Australian Marine Science and Technology Limited
Australian Maritime College
Australian Maritime Safety Authority
Australian National Training Authority
Australian National University
Australian Nuclear Science and Technology Organisation
Australian Pork Corporation
Australian Sports Commission
Australian Sports Drug Agency
Australian Tourist Commission
Australian Trade Commission
Australian Wine and Brandy Corporation
Calvary Hospital ACT Incorporated
Canberra Theatre Trust
Centralian College
Civil Aviation Safety Authority
Conservation Commission of the Northern Territory
Commonwealth Scientific and Industrial Research Organisation (CSIRO)
Cotton Research and Development Corporation
Dairy Research and Development Corporation
Export Finance and Insurance Corporation
Film Australia

approved authorities con't

Fisheries Research and Development Corporation
Forest and Wood Products Research and Development Corporation
Grains Research and Development Corporation
Health Insurance Commission
Health Services Australia Ltd
High Court of Australia
Horticultural Research and Development Corporation
Indigenous Land Corporation
Katherine Rural College
Land and Water Resources Research and Development Corporation
Law Courts Limited
Legal Aid Commission (ACT)
Melbourne Symphony Orchestra
Menzies School of Health Research
Murray Darling Basin Commission
Museums and Art Galleries Board established by the *Museums and Art Galleries Ordinance 1965* (Northern Territory)
National Gallery of Australia
National Registration Authority of Agriculture and Veterinary Chemicals
National Standards Commission
Northern Territory of Australia
Northern Territory Tourist Commission
Northern Territory University
Nuclear Safety Bureau
Pig Research and Development Corporation
Power and Water Authority
Private Health Insurance Administration Council
Private Health Insurance Complaints Commissioner
Queensland Orchestras Pty Ltd
Rural Industries Research and Development Corporation
Snowy Mountains Hydro-Electric Authority
Special Broadcasting Service
Sugar Research and Development Corporation
Sydney Symphony Orchestra Holdings Pty Limited
Symphony Australia Holdings Pty Ltd
Tasmania Symphony Orchestra Holdings Pty Ltd
Totalcare Industries Limited
Trade Development Zone Authority
University College, the College established by the University of New South Wales within the Australian Defence Force Academy
University of Canberra
West Australian Symphony Orchestra Holdings Pty Ltd

Appendix D: Eligible superannuation schemes

A Transfer Value may be paid to a superannuation scheme which has been declared by the Minister for Finance and Administration to be an eligible superannuation scheme for the purposes of the Commonwealth Superannuation Scheme.

The following schemes have been declared eligible.

- Superannuation schemes established under the following acts:

Defence Force Retirement and Death Benefits Act 1973;
Parliamentary Contributory Superannuation Act 1948, and
Superannuation (State Public Sector) Act 1990 (QLD)

- The superannuation schemes known as:

AIDC Executive Superannuation Plan;
 AIDC Staff Superannuation Plan;
 Army and Air Force Canteen Service Superannuation Scheme;
 Australian Wool Corporation Provident Fund;
 AUSSAT Superannuation Fund;
 AV Super (formerly known as the CAA Staff Superannuation Fund);
 Gladstone Area Water Board Staff Superannuation Scheme;
 Gladstone Port Authority Staff Superannuation Scheme;
 Gold Coast Waterways Staff Superannuation Scheme;
 Government Officer's Superannuation Scheme (Gosuper) (Queensland);
 Livestock and Meat Authority of Queensland Superannuation Scheme;
 Northern Territory Government and Public Authorities Superannuation Scheme;
 Queensland Ambulance Transport Brigade Staff Superannuation Scheme;
 Queensland Electricity Supply Industry Superannuation Scheme;
 Queensland Industry Development Corporation Superannuation Scheme;
 Queensland Local Government Employees Superannuation Scheme;
 Queensland Parliamentary Contributory Superannuation Scheme;
 Queensland Police Superannuation Scheme;
 Queensland State Service Superannuation Scheme;
 UniSuper Investment Choice Plan;
 Townsville Port Authority Staff Superannuation Scheme;
 University of Newcastle Staff Superannuation Scheme.

Appendix E: Freedom of information

Freedom of information

Matters associated with the administration of the *Freedom of Information Act 1982* are dealt with by ComSuper's Corporate Governance and Parliamentary Liaison Unit.

CSS members made 54 requests for access to documents during 2001–02. Fifty one of these requests were granted in full and three refused. The requests took an average of 3 days to process.

Enquiries relating to the documentary disclosure of information about the personal affairs of clients of the agency under the provisions of the Freedom of Information Act should be directed to:

Corporate Governance and Parliamentary Liaison Unit

ComSuper
PO Box 22
Belconnen ACT 2616
Facsimile: (02) 6272 9809
Telephone: (02) 6272 9262
TTY: (02) 6272 9827
Internet: www.comsuper.gov.au

Freedom of information Act statement

This statement is provided in accordance with section 8 of the *Freedom of Information Act 1982* (the FOI Act).

Functions of ComSuper

The general functions of ComSuper are described in the main body of this report and in the Commissioner for Superannuation Annual Report 2001-02.

Decision-making powers

With effect 1 July 1994 the *Superannuation Legislation Act 1994* transferred the Commissioner for Superannuation's decision making powers to the CSS Board. The Commissioner does, however, retain powers for all decisions taken prior to 1 July 1994.

Sections 17 and 17A of the *Superannuation Act 1976* contain the decision-making powers. Section 25 of the 1976 Act contains the authority for the Commissioner to delegate powers.

The decision-making powers of the CSS Board are set out in sections 27C and 27D of the *Superannuation Act 1976*. The authority for the CSS Board to delegate its powers and functions is set out in section 27Q of that Act.

The CSS Board retains full responsibilities in relation to fund investment and invalidity assessment.

FOI internal procedures

All requests for documents are referred to ComSuper's Corporate Governance and Parliamentary Liaison Unit. Compliance with the application fee provisions of the FOI Act are verified and the request is registered and acknowledged. The documents are then obtained and the request is considered by the Unit.

Decisions to grant access, levy charges, or refuse access are made by an APS Level 5 in the Corporate Governance and Parliamentary Liaison Unit.

Requests for internal review of FOI decisions are also referred to the Unit. They are then forwarded to the Reconsideration section where they are investigated prior to submission to the CSS Board for decision under section 54 of the FOI Act.

Officers currently designated to carry out such investigations are APS Level 7 officers in the Reconsideration Section. All decisions on internal reviews are made by the CSS Board.

Facilities for access

Facilities for viewing documents are provided only at the ComSuper office in Canberra, as ComSuper has no regional offices. Publications may be inspected at ComSuper's FOI Unit, and copies (for which there may be a charge) can be obtained by writing to ComSuper.

Information about facilities for access by people with disabilities can be obtained by contacting:

Corporate Governance and Parliamentary Liaison Unit, ComSuper
PO Box 22
Belconnen ACT 2616
Tel: (02) 6272 9262
Fax: (02) 6272 9809.
TTY:(02) 62729827.
Internet: www.comsuper.gov.au

Consultative arrangements

Informal and ad hoc arrangements exist whereby the national, State and Territory branches of the Superannuated Commonwealth Officers' Association, and those unions whose members are covered by the CSS may make representations relating to the general administration of the Schemes. Representations are also received which relate to the determination of individual contributors' benefit entitlements.

Requests for consultation and/or representations relating to policy aspects of the Schemes and their underlying legislation are referred to the Superannuation Branch of the Department of Finance and Administration which has responsibility for advising the Minister for Finance and Administration on such matters.

Categories of documents

The CSS Board maintains no categories of documents that are open to public access as part of a public register or otherwise, in accordance with an enactment other than the FOI Act, where that access is subject to a fee or other charge. Books and leaflets that describe various aspects of the superannuation schemes, and annual reports, are made available to the public free of charge upon request. They are also available free of charge via the CSS Internet site.

Appendix F: Publications

The Board publishes several booklets and a series of leaflets for the benefit of CSS members.

The CSS Book is a general information book that is intended as a reference book for members and personnel officers.

There are three booklets entitled *CSS Benefits Tables*, *CSS Preservation Factors* and *Taxation of Lump Sum and Pension Benefits* provided for the information of members. Also available is *ComSuper Service Charter 2001–2003*, which sets out the service standards members can expect to receive when they deal with ComSuper.

The Board also publishes a series of leaflets that deal in more depth with a specific topic. The leaflets are entitled:

A Summary of the Scheme
About to Leave Your Job?—Some Important Things You Should Know
Changing from Permanent Full-time to Permanent Part-time
Death Benefits
Invalidity Benefits
Involuntary Retirement (Retrenchment)
Postponement of Benefits
Preservation of Benefits
Summary of the Scheme
Superannuation Contributions Surcharge
Taxation Concessions—Deductible Amounts and Superannuation Pension Rebates
Thinking of Opting Out of the CSS or PSS?—Some Things You Should Consider

All of these publications can be obtained from members' personnel offices; from National Mailing and Marketing on telephone (02) 6269 1020 or facsimile (02) 6269 2770; or from the CSS web site (www.css.gov.au).

Appendix G: Contact officer

Information available to Members of Parliament, Senators and members of the public on request.

In the interests of timeliness and conciseness, this report has been designed to provide fundamental information. Requests for more detailed information should be directed to:

Ministerial Liaison Officer

Postal address: ComSuper
PO Box 22
Belconnen ACT 2616

Street address: Unit 1, Cameron Offices
Chandler Street
Belconnen ACT

Facsimile: (02) 6272 9809
Telephone: (02) 6272 9262
TTY: (02) 6272 9827

Appendix H: Compliance

While this report is not a Departmental annual report, the Board has endeavoured to comply with the Requirements for Departmental Annual Reports, where applicable. Details of ComSuper's operations are provided in the Commissioner for Superannuation Annual Report 2001-02. Annual reporting requirements that are met in the Commissioner for Superannuation's report are indicated below by an asterisk.

Requirement	Page
Letter of transmittal	iii
Table of contents -	v
Index	129
Glossary	128
Contact Officers	ii, 122
Internet Addresses	ii, 122
Chairperson's Overview	ix
Departmental Overview	*
Report on Performance	
Review of Performance	19
Performance of purchaser / provider arrangements	19
Performance against service charter	22, 51, 53, 54, 56, 61, 64, 65, 67, 69, 72, 74, 76
Management / Accountability	
Governance	13, 33
External scrutiny	19, 79, 101
Management of human resources	7, 124
Purchasing	9
Assets management	9
Consultants and competitive tendering	125
Commonwealth disability strategy	127
Financial statements	79
Matters required by legislation	
Occupational Health and Safety	8
Freedom of Information	76, 118
Advertising and market research	126
Ecologically sustainable development and environmental performance	10

Appendix I: Staffing statistics

CSS Board staffing statistics for 2001–02.

Employment Category	Male	Female	Total
Staff employed directly by the CSS Board	3	6	9
ComSuper staff on secondment	-	4	4
Total	3	10	13

Appendix J: Consultancies

The CSS Board engages consultants where a specialist skill or expertise is required or where internal resources are unavailable. Consultants are typically engaged to:

- investigate or diagnose a defined issue;
- carry out defined reviews or evaluations; or
- provide independent advice, information or solutions to assist the CSS Board in its decision making.

These consultancies have been distinguished from other service provider contracts by the nature of the work performed, which typically involves the application of expert professional skills and the exercising of expert judgement.

Investment and management of the CSS Fund

The investments of the Fund (other than cash held for meeting daily administrative and benefit expenses) are managed on behalf of the Board by specialist sector fund managers who are required to invest the assets allocated for management, in accordance with the terms of a written investment mandate.

During 2001–02, the Board also employed three investment advisors: Towers Perrin, JANA Investment Advisors and Wilshire Australia, together with Chase Manhattan Bank (trading as J P Morgan) as their master custodian. The total amount paid to investment managers, advisors and the custodian during the year was \$11.3 million.

Board administration consultancies

The Board's administration revenue and expenses are incorporate in the financial statements of the Commissioner for Superannuation. During 2001–02, the Commissioner for Superannuation made payments, on behalf of the Board, in respect of a number of consultancies, which are listed in the report of the *Commissioner for Superannuation 2001–02*.

Advertising and market research

Payments made on behalf of the CSS Board to media advertising and direct mail organisations during 2001–02 were as follows:

CSS and PSS Boards media advertising 2001–02

Organisation	Service provided	Total 01/02
Mirror Australian - Telegraphic Publications	Public announcements	\$181
HMA George Patterson Pty Ltd	Job advertisements	\$1 120
Total		\$1 302

CSS and PSS Boards direct mailing organisations

Organisation	Service provided	Total 01/02
Hermes Precisa	Special communications mail out	\$30 292
Australian Air Express	Special communications mail out	\$3 448
Total		\$33 741

Appendix K: Commonwealth Disability Strategy

Within the framework of the Commonwealth Disability Strategy, the CSS performs the role of 'provider' with performance measured against the following indicators:

- providers have established mechanisms for quality improvement and assurance;
- providers have an established service charter that specifies the roles of the provider and consumer and service standards which address accessibility for people with disabilities; and
- complaints/grievance mechanism, including access to external mechanisms, in place to address issues and concerns raised about performance.

In conjunction with its administrator, ComSuper, the CSS Board met all the requirements of the Commonwealth Disability Strategy in its role as provider.

Quality improvement and assurance mechanisms were in place during the year in the form of a client satisfaction survey conducted both by the Board, through its communications service provider Social Change Media and independent research firm D&M Research, and by ComSuper which conducts an annual cyclical research program through independent research firm Orima Research.

The CSS provides a website which was developed by contract to comply with Government Online targets and the World Wide Consortium (WC3) Web Content Accessibility Guidelines. For example, it is a HTML-based website which allows access to readers for the visually-impaired.

Through ComSuper, CSS members have access to:

- a TTY phone line;
- a service charter specifying the roles and responsibilities of both ComSuper and its clients; and
- a complaints system to address issues and concerns raised by members.

Both the CSS Board Executive Unit offices and ComSuper's offices provide wheel chair access and facilities.

Appendix L: Glossary

List of abbreviations

ABN	Australian Business Number
ACTEW	ACT Electricity and Water Corporation Ltd
ACTU	Australian Council of Trade Unions
AD(JR) Act	<i>Administrative Decisions (Judicial Review) Act 1977</i>
AGEST	Australian Government Employees Superannuation Trust
AIDC	Australian Industry Development Corporation
ANAO	Australian National Audit Office
APRA	Australian Prudential Regulation Authority
APS	Australian Public Service
ASFA	Association of Superannuation Funds of Australia
ASX	Australian Stock Exchange
ATO	Australian Taxation Office
BZW	Berufsbildungszentrum Wädenswil
CASA	Civil Aviation Safety Authority
CEO	Chief Executive Officer
CMAPS	Confidential Medical and Personal Statement
CMSF	Conference of Major Superannuation Funds
ComSuper	Commonwealth Superannuation Administration
CPSU	Community and Public Section Union
CSB	Commonwealth Superannuation Board
CSS	Commonwealth Superannuation Scheme
CSS Act	<i>Superannuation Act 1976</i>
DoFA	Department of Finance and Administration
DQI	Data Quality Index
FMA Act	<i>Financial Management and Accountability Act 1997</i>
FOI	Freedom of Information
HREOC	Human Rights and Equal Opportunity Commission
ICM	Independent Claims Management Pty Ltd
ISBN	International Standard Book Numbering
ISSN	International Standard Serial Number
PSS	Public Sector Superannuation (scheme)
PSS Act	<i>Superannuation Act 1990</i>
QSI	Quality Service Index
RAC	Reconsideration Advisory Committee
S&P	Standard and Poor's
SIS Act	<i>Superannuation Industry (Supervision) Act 1993</i>
SCT	Superannuation Complaints Tribunal
SPIN	Superannuation Product Identification Number
SRC Act	<i>Superannuation (Resolution of Complaints) Act 1993</i>
TPD	Total Permanent Disability
TTY	Text Telephone
WIM	Westpac Investment Management

Index

A

Abbott, Tony 22
 ACTU 1, 128
 Administrative arrangements 5
Administrative Decisions (Judicial Review) Act 1977 (the AD(JR) Act) 75, 128
 Administrator 7, 22, 25, 30, 51, 54, 56, 57, 59, 127, xii, xiii
 AGESt Superannuation Fund 3, 128
 Annual Results ix
 assets 4, 9, 13, 24, 37, 38, 40, 42, 44, 47, 48, 61, 83, 84, 85, 86, 87, 88, 90, 93, 94, 95, 96, 97, 98, 99, 111, 113, 123, 125, ix
 Attorney General's 74, 114
 Audit 14, 18, 19, 25, 26, 51, 54, 57, 65, 67, 72, 74, 79, 93, 128, x, xii
 Auditor 18, 79, xii
 Australian Air Express 126
 Australian National Audit Office, ANAO 26, 27, 79, 93, 128
 Australian Railtrack Corporation 3
 Australian Prudential Regulation Authority, APRA 11, 29, 128, xiv
 Australian Superannuation Funds Association, ASFA 7, 17, 128
 Australian Taxation Office, ATO 55, 92, 93, 128

B

Balanced Equity Management Pty Limited 39
 Balderstone, Richard 3, 23, 31, 99
 Bankstown Airport 112
 Blairlogie Capital Management 39

C

Carberry, Michael 23, 71
 Chairperson 1, 17, 18, 23, 24, 26, 29, 82, iii, xv
 Chairperson's overview ix
 Charter 3, 22
 Chase Manhattan Bank 38,
 Chief Executive Officer. 17, 18, 21, 22, 31, 128, xiii
 Client Service Charter Awards 22
 Colonial First State Investments Ltd 39
 Commissioner 7, 8, 9, 74, 87, 89, 90, 118, 119, 123, 125, ii. See also CEO; See also ComSuper

Committee
 Administration Committee 27
 Audit Committee 25
 Communications Committee 30
 Governance Committee 33
 Investment Committee 23
 Meetings 17, 24, 26, 31,
 Commonwealth Disability Strategy 127, vi
 Commonwealth Superannuation Administration. See ComSuper
 Communications 4, 5, 15, 23, 30, 31, 32, 33, 55, 56, 59, 69, 114, 126, 127, vi, xii, xiii
 Communications Workers Union 2
 Community and Public Section Union, CPSU 1, 2, 128
 Complaints 71, 74, 75, 76, 77, 116, 127, vi
 Compliance 20, 29, 119, 123, vi, xiv
 Index 123
 ComSuper 1, 4, 7, 8, 9, 21, 22, 23, 25, 26, 29, 38, 51, 53, 54, 55, 56, 57, 59, 60, 61, 63, 64, 65, 67, 69, 71, 72, 73, 74, 76, 89, 90, 118, 120, 121, 122, 124, 127, 128, ii, xii, xiii, xv. See also Commissioner; See also CEO
 Consolidated Revenue 11, 89, 93, 98
 Consultancies 79, 125, 126, vi
 Consultants 125, 126
 Contributor 32, 51, 52, 53, 54, 55, 56, 57, 58, 59, 60, 61, 62, 63, 64, 65, 66, 111, vi
Copyright Act 1968 ii
 Corporations and Securities Panel 2
 Counselling 32, 57, 59, 67, vii
 CPSU 2, 3, 128
 Crediting rate 40, 42, 46, 47, 48, 49, 97, 110, 113, vii, ix, x

D

Data Quality Index, DQI 51, 52
 Deloitte Touche Tohmatsu 2
 Department of Communications, Information Technology and the Arts ii, 114
 Department of Finance and Administration 2, 27
 Department of the Prime Minister and Cabinet 2, 114
 Deutsche Asset Management Limited 39
 Dockett, Trevor 23, 71

E

Earning rates ix
 Employer 3, 8, 9, 11, 24, 46, 51, 52, 54, 55, 63, 83,
 86, 87, 89, 90
 Environmental 10, 35, x
 Exit 11, 47, 49, 61, 97, 113, ii, v, vii
 Export Finance Insurance Corporation 2

F

Financial Management and Accountability Act
 1997 (FMA Act) 9, 18
 Financial Risk Management 39
 Financial statements 79
 Flitcroft, John 2, 99
 Fraud 18
 Freedom of Information 76, 118, vi
Freedom of Information Act 1982 76, 118
 Friends Ivory & Sime 39
 Fund size 111

G

Glossary 128
 Governance 2, 4, 13, 14, 15, 16, 17, 18, 19, 20, 21,
 22, 23, 31, 33, 34, 35, 118, 119, 120, 123, v, x, xii

H

H-G Ventures 2
 Hall, Winsome 2, 23, 26, 31, 35, 82, 99
 Harris Associates LP 39
 Hermes Precisa 126
 HMA George Patterson Pty Ltd 126

I

i-Estimator 57, xiii
 incapacitated. 63, 64
 Insurance 2, 16, 28, 29, 115, 116
 Internet 46, 59, 67, 118, 120, 123, ii
 Invalidity 7, 28, 29, 60, 61, 63, 64, 65, 67, 72, 81,
 91, vi, vii, xii
 investment 1, 2, 3, 4, 5, 7, 8, 13, 16, 20, 23, 24, 25,
 28, 32, 34, 37, 38, 39, 40, 41, 42, 43, 44, 45, 46,
 47, 48, 49, 53, 65, 83, 85, 86, 89, 90, 93, 94, 96,
 98, 99, 110, 119, 125, v, ix, x, xi, xii, xiii, xiv
 Irons, David 2

J

JANA Investment Advisers Pty Ltd 38, 94, 125, xi
 Jardine Fleming Capital Partners Group 3
 JP Morgan Investment Management Inc 39, 45,
 94, 125
 Jupiters Limited 39, 42, 43

L

Legal 15, 28, 29, 75, 116
 legislation 4, 5, 8, 9, 13, 14, 18, 32, 54, 55, 63, 77,
 112, 119, 120, vi, ix, xiv
 Local Government Financial Services Pty Ltd 1
 Loomis, Sayles & Company, LP 39

M

Major, Hugh 71
 Manolios, Cathy 2, 23, 29, 35, 99
 McBride, Louise 2, 23, 26, 99, xv
 Member 2, 3, 4, 5, 11, 15, 16, 17, 24, 30, 31, 32, 33,
 47, 48, 49, 51, 52, 53, 55, 56, 57, 59, 71, 76, 88,
 89, 111, xiii, xv
 Membership 1, 7, 11, 24, 26, 29, 31, 34, ii, v, vii
 Member statements 5, 31, 32, 33, 51, 57
 Merrill Lynch Investment Management plc 39,
 45
 Minchin, Nick Hon. MP iii
 Ministerial 77, vii
 Minister for Finance and Administration x
 Mirror Australian - Telegraphic Publications 126
 Monash University x

N

National Mailing and Marketing 126
 National Portrait Gallery 2
 NRMC Pty Ltd 3
 NSW State Authorities Superannuation Board 1

O

O'Loughlin, Sally 3, 23, 29, 31, 99
Occupational Health and Safety (Commonwealth
Employment) Act 1991 8
 Ombudsman 76, 77, vii
 Online 22, 31, 32, 34, 127, xiii
 outcomes 22, 51, 53, 54, 56, 61, 64, 65, 67, 69, 72,
 73, 74, 76, vii

P

Palmer, Joy 3, 23, 26, 29, 35, 99
 Pareto Partners 39
 Paribas Asset Management Limited 39
 Payments 4, 60, 63, 65, 67, 87, 98, 125, 126, vi
 Pension 11, 34, 67, 69, 75
 Pensioners 67, 68, 69, 70, 88, vi
 Pensions 67, 68, vi
 Performance 4, 5, 10, 14, 15, 16, 17, 20, 22, 24, 25,
 27, 28, 29, 31, 32, 33, 38, 40, 42, 43, 45, 47, 51,
 56, 60, 63, 73, 93, v, vii, ix, x, xi, xiii
 Perpetual Asset Management Limited 39
 Preservation 71
 Publications 120, 121, 126, ii, vi
Public Service Act 1999 7
 Purchasing 9

Q

Quality 19, 32, 33, 51, 57, 69, vii
 Quality Service Index, QSI 21, 128, vii

R

Reconsideration 3, 7, 71, 72, 73, vi, vii
 representations 76, 77, 120
 reserving policy ix
 Review 5, 7, 11, 14, 16, 25, 34, 40, 41, 51, 71, 74,
 75, 76, 99, 101, 119, 123, 125, vi, xi, xii, xiii
 Reynolds, Peter 1, 23, 83, 99, iii, xv

S

Safety, Rehabilitation and Compensation Act 1988
 8
 Scheme membership 92, 111
 Schroder Investment Management (Australasia)
 Limited 39
 Seminars 17, 32, 56, 57, 59, vii
 Service award for excellence 20
 SIS. See *Superannuation Industry (Supervision) Act*
1993 (SIS Act)
 Skinner, Peter 22
 Snowy Hydro Limited 111
 Standard 51, 52, 53, 54, 56, 61, 64, 65, 67, 69, 72,
 73, 74, 76
 State Super Financial Services Pty Ltd 1

Statutory rules 112
 strategic asset allocation xi
Superannuation Act 1976 1, 3, 13, 74, 82, 85, 88,
 89, 119, 128, iii
 Superannuation Complaints Tribunal (SCT) 71,
 74, 75, 128
Superannuation Guarantee (Administration) Act
1992 97, 112
Superannuation Legislation Act 1994 119
Superannuation Legislation Amendment Act 1994
 74
 Superannuation Members Home Loan Schemes
 39
Superannuation Industry (Supervision) Act 1993
 (SIS Act) 5, 11, 13, 30, 32, 55, 56, 69, 71, 74, 76,
 125, 128, xiv
 Surcharge 55, 87, 92, 93, 94, 112, vi, vii
Surcharge Contributions Tax (Assessment and
Collection) Act 1997 55
 Sydney Airports Corporation 112
 Sydney Harbour Federation Trust 112

T

Towers Perrin Australia Pty Ltd 38, 94, 99, 125, xi
 Transmittal, letter of iii
 Trustee 3, 15, 29, 30, 82, 99, 100
 Trustees 17, 49, 51, 74, xii, xv

V

Vanguard Investments Australia Limited 39

W

Web site 31, 32, 33, 57, 59, 67, xii
 Wellington Management Company LLP 39
 Westpac Investment Management (WIM) 35
 Westpeak Investment Advisors (Australia)
 Limited 39
 Wilshire Australia Pty Ltd 38, 94, 125, xi
 Wilson, Sandra 2, 3, 99

Z

Zurich Financial Services Australia Limited 2

CONTACT US

IF YOU WOULD LIKE TO CONTACT THE CSS BOARD

TELEPHONE 02 6263 6999

FACSIMILE 02 6263 6900

ADDRESS GPO Box 1907 Canberra City ACT 2601

INTERNET

For instant access to information www.css.gov.au